



United States
Department of
Agriculture

National
Agricultural
Statistics
Service



Pot 6 (06)

Potatoes

2005 Summary

September 2006

USDA



Table of Contents

	Page
Introduction	2
Narrative	3
Utilization	4
Area, Yield, and Production	
By Season and State	5
By State and United States	12
Disposition	
By Season and State	8
By State and United States	14
Price and Value	
By Season and State	8
By State and United States	14
Market Year Average Price for All Potatoes by State and United States	23
Monthly Prices	24
Processing	
Nine States Quantity	16
Chips and Shoestrings	17
Stocks	18
Shrinkage and Loss	18
Farm Marketings	20
Alaska	22
Varieties of Fall Potatoes	28
Percent of Acreage Planted by Type	32
Acres Planted for Certified Seed	32
Potato Objective Yield Results	33
Potato Size and Grade	35
Information Contacts	38

Introduction

This publication presents 2005 potato estimates of acreage, yield per acre, production, farm disposition, season average price, value, and utilization of sales including processing with historic comparisons. Also included are first of the month stocks of potatoes (December through June) for the 13 major fall potato producing States. Monthly prices, farm marketings, varieties of fall potatoes, percent of acreage planted by type, certified seed acres, objective yield results, and size and grade are also included for selected States. Production, disposition, and value data for Alaska are shown separately.

These estimates are based on information furnished by crop reporters, processors, and cooperating State or Federal Agencies. The various sources include: Market News Service rail and truck shipments, Federal-State inspections, and miscellaneous data available through marketing programs.

Price estimates represent average returns to growers for all uses and for all methods of sale, including the value paid for a government diversion program. These prices are applied to total production to compute value of production and to the quantity sold to compute value of sales. Some unsold potatoes contribute to the value of production, including farm use for seed, feed, home use, and loss. The United States season average price is obtained by weighting State prices by quantities sold.

Potato production, utilization, and value of sales in each State have been classified by seasonal group according to the period (quarter) when the largest supplies are harvested.

The four seasonal groups are as follows:

Season	Usual Time of Harvest
Winter	January through March
Spring	April through June
Summer	July to Mid-September
Fall	September through November

A crop year is associated with the calendar year in which harvest is accomplished. Seasons are not fixed dates but are approximations because of overlapping of harvest before or after the specified season. Generally, the marketing season closely follows harvest except for fall potatoes when marketing from storage may extend through August of the following year. Thus, the marketing year for fall potatoes is from the start of harvest through August of the following year.

2005 Potato Production Up 1 Percent

Total 2005 potato production is estimated at 424 million cwt, up 1 percent from the estimate made in the January Annual Crop Summary but 7 percent below the 2004 crop. Harvested area, at 1.09 million acres, decreased 7 percent from a year ago. This is the lowest harvested acres on record since the series began in 1866. The average yield of 390 cwt per acre is down 1 cwt from the record high set in 2004 but 23 cwt above the average yield from the 2003 crop.

Seasonal estimates are carried forward from earlier revisions. Winter potato production in 2005 is 4.89 million cwt, an increase of 2 percent from 2004. Harvested area, at 19,800 acres, is up 7 percent from the previous year. The average yield of 247 cwt per acre is down 13 cwt from 2004. Spring potatoes final estimate for 2005, at 18.7 million cwt, decreased 17 percent from the previous year. Harvested acres, at 66,700, are down 8 percent from 2004 and a record low. The average yield of 281 cwt per acre is 33 cwt below the record high set in 2004. Summer potato production is 17.6 million cwt for 2005, down 4 percent from 2004. Harvested area, at 51,400 acres, is down 5 percent from the previous year and a record low. The average yield of 342 cwt per acre is a record high, 2 cwt above the previous record high set in 2004. Fall potatoes are finalized at 383 million cwt for 2005, down 7 percent from the 2004 crop. Area harvested in 2005 is estimated at 949,000 acres, down 7 percent from a year earlier. The average yield, at 403 cwt per acre, is a record high, 2 cwt above the previous record high set in 2004.

The value of all potatoes sold in 2005 is estimated at \$2.76 billion, up 18 percent from the previous year. The average price, at \$7.06 per cwt, is up \$1.40 from a year earlier. Sales from the 2005 potato crop totaled 391 million cwt, down 6 percent from 2004. Sales account for 92 percent of 2005 production. Non-sales account for 33.3 million cwt, 21 percent below the previous year. Over the past five years, 92 percent of the potatoes grown have been sold. The other 8 percent were either lost (shrinkage and loss) or used on farms where grown (seed, home use, and livestock feed).

Processors used 246 million cwt of raw potatoes from the 2005 crop, down 5 percent from a year earlier. Table stock sales totaled 120 million cwt, 8 percent below the previous year. Seed sales of 22.3 million cwt are down 3 percent from 2004. Sales for livestock feed, at 2.00 million cwt, are up 3 percent from a year earlier.

Potatoes used for chips and shoestrings totaled 51.0 million cwt in 2005, up 2 percent from the previous year. Frozen french fries and other frozen products utilized 148 million cwt of raw potatoes, down 4 percent. Potatoes used for dehydrating totaled 42.3 million cwt, 13 percent below 2004. Canning use, at 3.05 million cwt, fell 20 percent. Starch, flour, and other products were made from 1.58 million cwt of potatoes, 3 percent above the previous year.

Shrinkage and loss is estimated at 28.5 million cwt for 2005, down 24 percent from 2004. Potatoes used for livestock feed on farms where grown and home use totaled 1.19 million cwt, 1 percent below the previous season. Growers kept 3.60 million cwt for seed on their own farms, virtually unchanged from a year earlier.

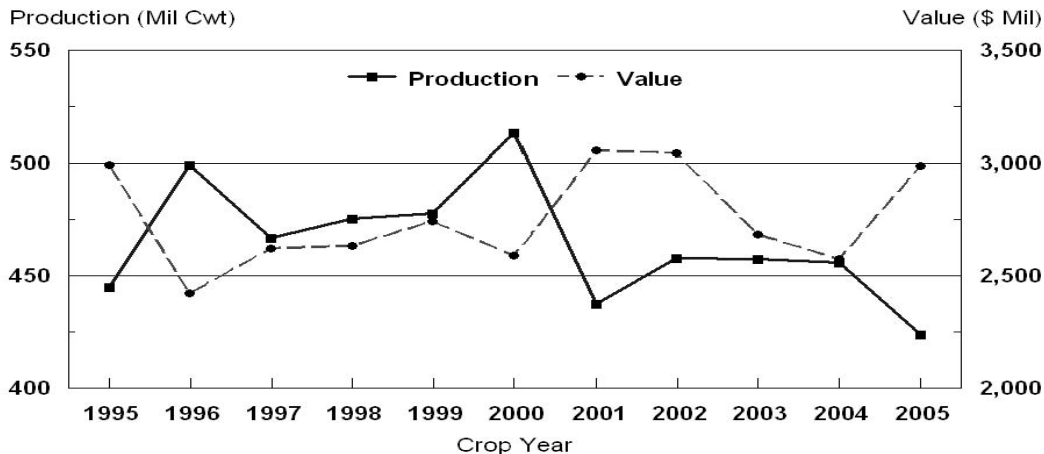
Potatoes: Utilization of Crops, United States, 2002-2005

Utilization Items	Crop Year			
	2002	2003	2004	2005
	<i>1,000 Cwt</i>	<i>1,000 Cwt</i>	<i>1,000 Cwt</i>	<i>1,000 Cwt</i>
Sales				
Table Stock	131,889	133,143	130,418	120,372
Processing				
Chips and Shoestrings	51,640	52,790	50,068	50,998
Dehydration ¹	51,357	48,418	48,541	42,312
Frozen French Fries	124,875	126,515	131,592	123,298
Other Frozen Products	28,951	23,870	23,003	24,747
Canned Products	2,744	3,086	2,843	2,120
Other Canned Products (Hash, Stews, Soups)	2,089	1,168	984	934
Starch, Flour, and Other	1,050	1,379	1,531	1,582
Total	262,706	257,226	258,562	245,991
Other Sales				
Livestock Feed	3,044	2,005	1,942	1,999
Seed	24,005	24,603	22,915	22,254
Total	27,049	26,608	24,857	24,253
Total Sales	421,644	416,977	413,837	390,616
Non-Sales				
Seed Used on Farms				
Where Grown	4,144	4,000	3,601	3,604
Household Use and Used for				
Feed on Farms Where Grown	1,478	1,543	1,195	1,187
Shrinkage and Loss ²	30,905	35,294	37,408	28,519
Total Non-Sales	36,527	40,837	42,204	33,310
Total Production	458,171	457,814	456,041	423,926

¹ Dehydrated products except starch and flour.

² Includes potatoes disposed of by the United Fresh Potato Growers of Idaho for 2004.

U. S. Potato Production and Value



**Potatoes: Area Planted, Harvested, Yield, and Production
by Seasonal Group, State, and United States, 2003-2005**

Seasonal Group and State	Area Planted			Area Harvested		
	2003	2004	2005	2003	2004	2005
	<i>1,000 Acres</i>	<i>1,000 Acres</i>	<i>1,000 Acres</i>	<i>1,000 Acres</i>	<i>1,000 Acres</i>	<i>1,000 Acres</i>
Winter						
CA	8.5	13.0	14.0	8.5	13.0	14.0
FL	6.1	5.7	6.0	5.8	5.5	5.8
Total	14.6	18.7	20.0	14.3	18.5	19.8
Spring						
AZ	7.6	6.2	4.3	7.6	6.2	4.3
CA	19.0	17.5	15.1	19.0	17.5	15.1
FL	30.0	24.8	23.6	28.6	24.5	23.2
Hastings	21.5	18.2	17.3	20.3	18.0	17.0
Other FL	8.5	6.6	6.3	8.3	6.5	6.2
NC	19.0	17.0	15.5	17.0	13.5	15.0
TX	13.0	11.0	9.5	12.5	10.5	9.1
Total	88.6	76.5	68.0	84.7	72.2	66.7
	Yield			Production		
	2003	2004	2005	2003	2004	2005
	<i>Cwt</i>	<i>Cwt</i>	<i>Cwt</i>	<i>1,000 Cwt</i>	<i>1,000 Cwt</i>	<i>1,000 Cwt</i>
Winter						
CA	310	250	250	2,635	3,250	3,500
FL	240	285	240	1,392	1,568	1,392
Total	282	260	247	4,027	4,818	4,892
Spring						
AZ	275	285	275	2,090	1,767	1,183
CA	440	475	405	8,360	8,313	6,116
FL	280	313	281	8,008	7,678	6,527
Hastings	280	320	280	5,684	5,760	4,760
Other FL	280	295	285	2,324	1,918	1,767
NC	175	200	190	2,975	2,700	2,850
TX	240	210	225	3,000	2,205	2,048
Total	288	314	281	24,433	22,663	18,724

**Potatoes: Area Planted and Harvested by Seasonal Group,
State, and United States, 2003-2005**

Seasonal Group and State	Area Planted			Area Harvested		
	2003	2004	2005	2003	2004	2005
	<i>1,000 Acres</i>	<i>1,000 Acres</i>	<i>1,000 Acres</i>	<i>1,000 Acres</i>	<i>1,000 Acres</i>	<i>1,000 Acres</i>
Summer						
AL	3.0	2.3	1.6	1.8	1.3	1.3
CA	7.5	7.0	6.2	7.2	7.0	6.2
CO	6.5	5.8	5.0	6.4	5.7	4.9
DE	3.7	3.3	3.3	3.6	3.1	3.1
IL	6.5	5.0	5.7	6.1	4.8	5.5
KS	2.8	3.5	5.1	2.7	3.4	5.0
MD	4.7	4.7	3.5	4.6	4.6	3.4
MO	8.0	6.9	6.5	7.1	6.2	6.3
NJ	2.8	2.3	2.1	2.7	2.2	2.1
NM ¹	1.9	1.2		1.9	1.0	
TX	9.0	10.4	9.4	8.4	9.6	8.7
VA	7.0	6.0	5.0	6.2	5.0	4.9
Total	63.4	58.4	53.4	58.7	53.9	51.4
Fall						
CA	8.3	7.6	7.6	8.3	7.6	7.6
CO	66.3	65.0	58.2	65.7	64.3	58.0
ID	360.0	355.0	325.0	358.0	353.0	323.0
10 SW Co	25.0	25.0	21.0	25.0	25.0	21.0
Other ID	335.0	330.0	304.0	333.0	328.0	302.0
IN ²	3.8	3.4		3.7	3.2	
ME	66.0	63.5	57.5	65.5	61.5	56.2
MA	3.0	2.6	2.5	2.7	2.5	2.4
MI	46.0	43.0	43.0	45.5	42.0	42.8
MN	60.0	47.0	46.0	58.0	44.0	43.0
MT	10.7	10.7	10.7	10.6	10.6	10.6
NE	23.5	22.0	19.5	23.2	21.6	19.4
NV	8.3	6.7	5.5	8.0	6.7	5.5
NM ¹	4.0	4.0	4.7	4.0	4.0	4.2
NY	22.2	20.0	20.5	21.7	19.2	20.1
ND	117.0	105.0	92.0	112.0	101.0	82.0
OH	4.5	3.7	3.7	4.3	3.6	3.6
OR	42.8	37.0	37.3	42.6	37.0	37.1
Malheur	5.8	5.2	3.8	5.8	5.2	3.8
Other OR	37.0	31.8	33.5	36.8	31.8	33.3
PA	13.0	12.0	11.5	12.5	11.0	11.0
RI	0.6	0.5	0.5	0.6	0.5	0.5
SD ³	1.0			1.0		
UT ³	1.0			1.0		
WA	163.0	160.0	154.0	162.0	159.0	154.0
WI	81.0	71.0	68.0	80.0	70.0	68.0
Total	1,106.0	1,039.7	967.7	1,090.9	1,022.3	949.0
US	1,272.6	1,193.3	1,109.1	1,248.6	1,166.9	1,086.9

¹ Summer potatoes combined with fall potatoes in 2005.

² Estimates discontinued in 2005.

³ Estimates discontinued in 2004.

**Potatoes: Yield and Production by Seasonal Group,
State, and United States, 2003-2005**

Seasonal Group and State	Yield			Production		
	2003	2004	2005	2003	2004	2005
	<i>Cwt</i>	<i>Cwt</i>	<i>Cwt</i>	<i>1,000 Cwt</i>	<i>1,000 Cwt</i>	<i>1,000 Cwt</i>
Summer						
AL	185	175	150	333	228	195
CA	385	350	355	2,772	2,450	2,201
CO	360	350	375	2,304	1,995	1,838
DE	240	260	260	864	806	806
IL	360	415	380	2,196	1,992	2,090
KS	380	400	360	1,026	1,360	1,800
MD	240	260	260	1,104	1,196	884
MO	265	310	340	1,882	1,922	2,142
NJ	250	270	255	675	594	536
NM ¹	280	340		532	340	
TX	420	440	465	3,528	4,224	4,046
VA	250	240	210	1,550	1,200	1,029
Total	320	340	342	18,766	18,307	17,567
Fall						
CA	425	480	435	3,528	3,648	3,306
CO	360	370	395	23,652	23,791	22,910
ID	344	374	366	123,180	131,970	118,288
10 SW Co	465	490	470	11,625	12,250	9,870
Other ID	335	365	359	111,555	119,720	108,418
IN ²	250	350		925	1,120	
ME	260	310	275	17,030	19,065	15,455
MA	265	320	260	716	800	624
MI	330	325	325	15,015	13,650	13,910
MN	385	430	410	22,330	18,920	17,630
MT	315	335	325	3,339	3,551	3,445
NE	420	430	425	9,744	9,288	8,245
NV	415	430	425	3,320	2,881	2,338
NM ¹	400	430	420	1,600	1,720	1,764
NY	300	270	260	6,510	5,184	5,226
ND	245	265	250	27,440	26,765	20,500
OH	255	300	240	1,097	1,080	864
OR	493	534	594	20,991	19,775	22,023
Malheur	415	470	450	2,407	2,444	1,710
Other OR	505	545	610	18,584	17,331	20,313
PA	270	240	250	3,375	2,640	2,750
RI	285	290	210	171	145	105
SD ³	340			340		
UT ³	335			335		
WA	575	590	620	93,150	93,810	95,480
WI	410	435	410	32,800	30,450	27,880
Total	376	401	403	410,588	410,253	382,743
US	367	391	390	457,814	456,041	423,926

¹ Summer potatoes combined with fall potatoes in 2005.

² Estimates discontinued in 2005.

³ Estimates discontinued in 2004.

**Potatoes: Production, Farm Disposition, Price, and Value
by Season, State, and United States, 2004 Crop**

Season and State	Prod	Total Used for Seed	Farm Disposition			Price per Cwt	Value of	
			Where Grown		Sold		Prod	Sales
			Seed, Feed, Home	Shrink and Loss				
	<i>1,000 Cwt</i>	<i>1,000 Cwt</i>	<i>1,000 Cwt</i>	<i>1,000 Cwt</i>	<i>1,000 Cwt</i>	<i>Dollars</i>	<i>1,000 Dollars</i>	<i>1,000 Dollars</i>
Winter								
CA	3,250	462	20	34	3,196	22.70	73,775	72,549
FL	1,568	156		9	1,559	21.70	34,026	33,830
Total	4,818	618	20	43	4,755	22.37	107,801	106,379
Spring								
AZ	1,767	86	2	14	1,751	12.40	21,911	21,712
CA	8,313	438	47	756	7,510	13.40	111,394	100,634
FL	7,678	614	1	38	7,639	8.30	63,626	63,285
Hastings	5,760	450	1	23	5,736	7.45	42,912	42,733
Other FL	1,918	164		15	1,903	10.80	20,714	20,552
NC	2,700	217	24	108	2,568	5.95	16,065	15,280
TX	2,205	152	30	40	2,135	7.50	16,538	16,013
Total	22,663	1,507	104	956	21,603	10.04	229,534	216,924
Summer								
AL	228	24	4	17	207	6.60	1,505	1,366
CA	2,450	186	24	25	2,401	14.50	35,525	34,815
CO	1,995	120	5	140	1,850	6.30	12,569	11,655
DE	806	50	4	23	779	7.00	5,642	5,453
IL	1,992	125	35	42	1,915	5.05	10,060	9,671
KS	1,360	122		54	1,306	7.05	9,588	9,207
MD	1,196	53	35	37	1,124	7.50	8,970	8,430
MO	1,922	130	1	19	1,902	5.45	10,475	10,366
NJ	594	29	3	18	573	5.50	3,267	3,152
NM ¹	340		1	11	328	6.75	2,295	2,214
TX	4,224	141	10	58	4,156	9.00	38,016	37,404
VA	1,200	70	1	42	1,157	7.90	9,480	9,140
Total	18,307	1,050	123	486	17,698	8.07	147,392	142,873

¹ Summer estimates combined with fall potatoes in 2005. "Total Used for Seed" is included under fall potatoes.

**Potatoes: Production, Farm Disposition, Price, and Value
by Season, State, and United States, 2004 Crop**

Season and State	Prod	Total Used for Seed	Farm Disposition			Price per Cwt	Value of	
			Where Grown		Sold		Prod	Sales
			Seed, Feed, Home	Shrink and Loss				
	<i>1,000 Cwt</i>	<i>1,000 Cwt</i>	<i>1,000 Cwt</i>	<i>1,000 Cwt</i>	<i>1,000 Cwt</i>	<i>Dollars</i>	<i>1,000 Dollars</i>	<i>1,000 Dollars</i>
Fall								
CA	3,648	213	1	292	3,355	7.95	29,002	26,672
CO	23,791	1,513	1,300	2,286	20,205	4.55	108,249	91,933
ID ¹	131,970	7,150	1,250	10,902	119,818	4.25	560,873	509,227
IN ²	1,120		5	50	1,065	6.10	6,832	6,497
ME	19,065	1,231	190	4,900	13,975	6.50	123,923	90,838
MA	800	59	5	6	789	6.60	5,280	5,207
MI	13,650	860	194	1,656	11,800	6.95	94,868	82,010
MN	18,920	837	100	1,750	17,070	5.45	103,114	93,032
MT	3,551	257	156	276	3,119	7.50	26,633	23,393
NE	9,288	519	212	906	8,170	5.20	48,298	42,484
NV	2,881	110		350	2,531	4.05	11,668	10,251
NM ³	1,720	94	10	110	1,600	5.00	8,600	8,000
NY	5,184	451	100	513	4,571	8.25	42,768	37,711
ND	26,765	1,794	240	2,825	23,700	5.80	155,237	137,460
OH	1,080	73	6	33	1,041	7.35	7,938	7,651
OR	19,775	955	241	1,264	18,270	5.10	101,241	93,460
Malheur	2,444	84	5	64	2,375	4.55	11,120	10,806
Other OR	17,331	871	236	1,200	15,895	5.20	90,121	82,654
PA	2,640	253	39	216	2,385	7.45	19,668	17,768
RI	145	14		3	142	7.65	1,109	1,086
WA	93,810	3,850	240	5,600	87,970	4.90	459,669	431,053
WI	30,450	1,360	260	1,985	28,205	5.75	175,088	162,179
Total	410,253	21,593	4,549	35,923	369,781	5.08	2,090,058	1,877,912
US	456,041	24,768	4,796	37,408	413,837	5.66	2,574,785	2,344,088

¹ Shrink and Loss includes potatoes disposed of by the United Fresh Potato Growers of Idaho.

² Estimates discontinued in 2005. "Total Used for Seed" not available.

³ Summer estimates combined with fall potatoes in 2005. "Total Used for Seed" includes summer and fall potatoes.

**Potatoes: Production, Farm Disposition, Price, and Value
by Season, State, and United States, 2005 Crop**

Season and State	Prod	Total Used for Seed	Farm Disposition			Price per Cwt	Value of	
			Where Grown		Sold		Prod	Sales
			Seed, Feed, Home	Shrink and Loss				
	<i>1,000 Cwt</i>	<i>1,000 Cwt</i>	<i>1,000 Cwt</i>	<i>1,000 Cwt</i>	<i>1,000 Cwt</i>	<i>Dollars</i>	<i>1,000 Dollars</i>	<i>1,000 Dollars</i>
Winter								
CA	3,500	420	35	140	3,325	19.10	66,850	63,508
FL	1,392	145		14	1,378	27.20	37,862	37,482
Total	4,892	565	35	154	4,703	21.47	104,712	100,990
Spring								
AZ	1,183	78	2	14	1,167	11.50	13,605	13,421
CA	6,116	447	61	550	5,505	13.00	79,508	71,565
FL	6,527	599		65	6,462	11.70	76,485	75,722
Hastings	4,760	443		47	4,713	10.50	49,980	49,487
Other FL	1,767	156		18	1,749	15.00	26,505	26,235
NC	2,850	245	25	111	2,714	7.70	21,945	20,898
TX	2,048	171	26	37	1,985	9.95	20,378	19,751
Total	18,724	1,540	114	777	17,833	11.29	211,921	201,357
Summer								
AL	195	26	3	6	186	8.55	1,667	1,590
CA	2,201	202	11	40	2,150	14.40	31,694	30,960
CO	1,838	98	4	134	1,700	8.45	15,531	14,365
DE	806	45	3	31	772	8.65	6,972	6,678
IL	2,090	143	36	42	2,012	6.10	12,749	12,273
KS	1,800	168		72	1,728	7.70	13,860	13,306
MD	884	60	24	25	835	8.30	7,337	6,931
MO	2,142	158	1	21	2,120	5.75	12,317	12,190
NJ	536	43	3	16	517	8.05	4,315	4,162
NM ¹								
TX	4,046	158	10	50	3,986	13.10	53,003	52,217
VA	1,029	84	2	36	991	10.50	10,805	10,406
Total	17,567	1,185	97	473	16,997	9.71	170,250	165,078

¹ Summer potatoes combined with fall potatoes in 2005.

**Potatoes: Production, Farm Disposition, Price, and Value
by Season, State, and United States, 2005 Crop**

Season and State	Prod	Total Used for Seed	Farm Disposition			Price per Cwt	Value of	
			Where Grown		Sold		Prod	Sales
			Seed, Feed, Home	Shrink and Loss				
	<i>1,000 Cwt</i>	<i>1,000 Cwt</i>	<i>1,000 Cwt</i>	<i>1,000 Cwt</i>	<i>1,000 Cwt</i>	<i>Dollars</i>	<i>1,000 Dollars</i>	<i>1,000 Dollars</i>
Fall								
CA	3,306	226		331	2,975	7.35	24,299	21,866
CO	22,910	1,498	1,200	1,650	20,060	8.65	198,172	173,519
ID	118,288	7,260	1,230	7,800	109,258	5.70	674,242	622,771
IN ¹								
ME	15,455	1,274	242	1,183	14,030	8.25	127,504	115,748
MA	624	71	4	8	612	8.80	5,491	5,386
MI	13,910	1,056	182	1,728	12,000	7.90	109,889	94,800
MN	17,630	1,061	140	1,600	15,890	6.45	113,714	102,491
MT	3,445	242	156	210	3,079	9.15	31,522	28,173
NE	8,245	515	231	834	7,180	8.45	69,670	60,671
NV	2,338	130		285	2,053	5.50	12,859	11,292
NM ²	1,764	115	14	150	1,600	6.80	11,995	10,880
NY	5,226	453	100	491	4,635	12.20	63,757	56,547
ND	20,500	1,900	240	1,810	18,450	6.80	139,400	125,460
OH	864	65	1	11	852	8.65	7,474	7,370
OR	22,023	837	255	1,392	20,376	5.85	128,835	119,200
Malheur ³								
Other OR ³								
PA	2,750	249	10	250	2,490	11.40	31,350	28,386
RI	105	12		2	103	8.50	893	876
WA	95,480	3,900	240	6,000	89,240	5.60	534,688	499,744
WI	27,880	1,474	300	1,380	26,200	7.85	218,858	205,670
Total	382,743	22,338	4,545	27,115	351,083	6.53	2,504,612	2,290,850
US	423,926	25,628	4,791	28,519	390,616	7.06	2,991,495	2,758,275

¹ Estimates discontinued in 2005.

² Summer estimates combined with fall potatoes in 2005.

³ Disposition estimates discontinued in 2005 for Malheur County and Other Oregon.

**Potatoes: Area Planted and Harvested by State
and United States, 2003-2005**

State	Area Planted			Area Harvested		
	2003	2004	2005	2003	2004	2005
	<i>1,000 Acres</i>	<i>1,000 Acres</i>	<i>1,000 Acres</i>	<i>1,000 Acres</i>	<i>1,000 Acres</i>	<i>1,000 Acres</i>
AL	3.0	2.3	1.6	1.8	1.3	1.3
AZ	7.6	6.2	4.3	7.6	6.2	4.3
CA	43.3	45.1	42.9	43.0	45.1	42.9
CO	72.8	70.8	63.2	72.1	70.0	62.9
DE	3.7	3.3	3.3	3.6	3.1	3.1
FL	36.1	30.5	29.6	34.4	30.0	29.0
ID	360.0	355.0	325.0	358.0	353.0	323.0
IL	6.5	5.0	5.7	6.1	4.8	5.5
IN ¹	3.8	3.4		3.7	3.2	
KS	2.8	3.5	5.1	2.7	3.4	5.0
ME	66.0	63.5	57.5	65.5	61.5	56.2
MD	4.7	4.7	3.5	4.6	4.6	3.4
MA	3.0	2.6	2.5	2.7	2.5	2.4
MI	46.0	43.0	43.0	45.5	42.0	42.8
MN	60.0	47.0	46.0	58.0	44.0	43.0
MO	8.0	6.9	6.5	7.1	6.2	6.3
MT	10.7	10.7	10.7	10.6	10.6	10.6
NE	23.5	22.0	19.5	23.2	21.6	19.4
NV	8.3	6.7	5.5	8.0	6.7	5.5
NJ	2.8	2.3	2.1	2.7	2.2	2.1
NM	5.9	5.2	4.7	5.9	5.0	4.2
NY	22.2	20.0	20.5	21.7	19.2	20.1
NC	19.0	17.0	15.5	17.0	13.5	15.0
ND	117.0	105.0	92.0	112.0	101.0	82.0
OH	4.5	3.7	3.7	4.3	3.6	3.6
OR	42.8	37.0	37.3	42.6	37.0	37.1
PA	13.0	12.0	11.5	12.5	11.0	11.0
RI	0.6	0.5	0.5	0.6	0.5	0.5
SD ²	1.0			1.0		
TX	22.0	21.4	18.9	20.9	20.1	17.8
UT ²	1.0			1.0		
VA	7.0	6.0	5.0	6.2	5.0	4.9
WA	163.0	160.0	154.0	162.0	159.0	154.0
WI	81.0	71.0	68.0	80.0	70.0	68.0
US	1,272.6	1,193.3	1,109.1	1,248.6	1,166.9	1,086.9

¹ Estimates discontinued in 2005.

² Estimates discontinued in 2004.

**Potatoes: Yield and Production by State
and United States, 2003-2005**

State	Yield ¹			Production		
	2003	2004	2005	2003	2004	2005
	<i>Cwt</i>	<i>Cwt</i>	<i>Cwt</i>	<i>1,000 Cwt</i>	<i>1,000 Cwt</i>	<i>1,000 Cwt</i>
AL	185	175	150	333	228	195
AZ	275	285	275	2,090	1,767	1,183
CA	402	392	353	17,295	17,661	15,123
CO	360	368	393	25,956	25,786	24,748
DE	240	260	260	864	806	806
FL	273	308	273	9,400	9,246	7,919
ID	344	374	366	123,180	131,970	118,288
IL	360	415	380	2,196	1,992	2,090
IN ²	250	350		925	1,120	
KS	380	400	360	1,026	1,360	1,800
ME	260	310	275	17,030	19,065	15,455
MD	240	260	260	1,104	1,196	884
MA	265	320	260	716	800	624
MI	330	325	325	15,015	13,650	13,910
MN	385	430	410	22,330	18,920	17,630
MO	265	310	340	1,882	1,922	2,142
MT	315	335	325	3,339	3,551	3,445
NE	420	430	425	9,744	9,288	8,245
NV	415	430	425	3,320	2,881	2,338
NJ	250	270	255	675	594	536
NM	361	412	420	2,132	2,060	1,764
NY	300	270	260	6,510	5,184	5,226
NC	175	200	190	2,975	2,700	2,850
ND	245	265	250	27,440	26,765	20,500
OH	255	300	240	1,097	1,080	864
OR	493	534	594	20,991	19,775	22,023
PA	270	240	250	3,375	2,640	2,750
RI	285	290	210	171	145	105
SD ³	340			340		
TX	312	320	342	6,528	6,429	6,094
UT ³	335			335		
VA	250	240	210	1,550	1,200	1,029
WA	575	590	620	93,150	93,810	95,480
WI	410	435	410	32,800	30,450	27,880
US	367	391	390	457,814	456,041	423,926

¹ Derived.

² Estimates discontinued in 2005.

³ Estimates discontinued in 2004.

**Potatoes: Production, Farm Disposition, Price, and Value
by State, and United States, 2004 Crop**

State	Prod	Total Used for Seed	Farm Disposition			Price per Cwt	Value of	
			Where Grown		Sold		Prod	Sales
			Seed, Feed, Home	Shrink and Loss				
	<i>1,000 Cwt</i>	<i>1,000 Cwt</i>	<i>1,000 Cwt</i>	<i>1,000 Cwt</i>	<i>1,000 Cwt</i>	<i>Dollars</i>	<i>1,000 Dollars</i>	<i>1,000 Dollars</i>
AL	228	24	4	17	207	6.60	1,505	1,366
AZ	1,767	86	2	14	1,751	12.40	21,911	21,712
CA	17,661	1,299	92	1,107	16,462	14.30	249,696	234,670
CO	25,786	1,633	1,305	2,426	22,055	4.70	120,818	103,588
DE	806	50	4	23	779	7.00	5,642	5,453
FL	9,246	770	1	47	9,198	10.60	97,652	97,115
ID ¹	131,970	7,150	1,250	10,902	119,818	4.25	560,873	509,227
IL	1,992	125	35	42	1,915	5.05	10,060	9,671
IN ²	1,120		5	50	1,065	6.10	6,832	6,497
KS	1,360	122		54	1,306	7.05	9,588	9,207
ME	19,065	1,231	190	4,900	13,975	6.50	123,923	90,838
MD	1,196	53	35	37	1,124	7.50	8,970	8,430
MA	800	59	5	6	789	6.60	5,280	5,207
MI	13,650	860	194	1,656	11,800	6.95	94,868	82,010
MN	18,920	837	100	1,750	17,070	5.45	103,114	93,032
MO	1,922	130	1	19	1,902	5.45	10,475	10,366
MT	3,551	257	156	276	3,119	7.50	26,633	23,393
NE	9,288	519	212	906	8,170	5.20	48,298	42,484
NV	2,881	110		350	2,531	4.05	11,668	10,251
NJ	594	29	3	18	573	5.50	3,267	3,152
NM	2,060	94	11	121	1,928	5.30	10,895	10,214
NY	5,184	451	100	513	4,571	8.25	42,768	37,711
NC	2,700	217	24	108	2,568	5.95	16,065	15,280
ND	26,765	1,794	240	2,825	23,700	5.80	155,237	137,460
OH	1,080	73	6	33	1,041	7.35	7,938	7,651
OR	19,775	955	241	1,264	18,270	5.10	101,241	93,460
PA	2,640	253	39	216	2,385	7.45	19,668	17,768
RI	145	14		3	142	7.65	1,109	1,086
TX	6,429	293	40	98	6,291	8.50	54,554	53,417
VA	1,200	70	1	42	1,157	7.90	9,480	9,140
WA	93,810	3,850	240	5,600	87,970	4.90	459,669	431,053
WI	30,450	1,360	260	1,985	28,205	5.75	175,088	162,179
US	456,041	24,768	4,796	37,408	413,837	5.66	2,574,785	2,344,088

¹ Shrink and Loss includes potatoes disposed of by the United Fresh Potato Growers of Idaho.

² Estimates discontinued in 2005. "Total Used for Seed" not available.

**Potatoes: Production, Farm Disposition, Price, and Value
by State, and United States, 2005 Crop**

State	Prod	Total Used for Seed	Farm Disposition			Price per Cwt	Value of	
			Where Grown		Sold		Prod	Sales
			Seed, Feed, Home	Shrink and Loss				
	<i>1,000 Cwt</i>	<i>1,000 Cwt</i>	<i>1,000 Cwt</i>	<i>1,000 Cwt</i>	<i>1,000 Cwt</i>	<i>Dollars</i>	<i>1,000 Dollars</i>	<i>1,000 Dollars</i>
AL	195	26	3	6	186	8.55	1,667	1,590
AZ	1,183	78	2	14	1,167	11.50	13,605	13,421
CA	15,123	1,295	107	1,061	13,955	13.50	202,351	187,899
CO	24,748	1,596	1,204	1,784	21,760	8.65	213,703	187,884
DE	806	45	3	31	772	8.65	6,972	6,678
FL	7,919	744		79	7,840	14.40	114,347	113,204
ID	118,288	7,260	1,230	7,800	109,258	5.70	674,242	622,771
IL	2,090	143	36	42	2,012	6.10	12,749	12,273
IN ¹								
KS	1,800	168		72	1,728	7.70	13,860	13,306
ME	15,455	1,274	242	1,183	14,030	8.25	127,504	115,748
MD	884	60	24	25	835	8.30	7,337	6,931
MA	624	71	4	8	612	8.80	5,491	5,386
MI	13,910	1,056	182	1,728	12,000	7.90	109,889	94,800
MN	17,630	1,061	140	1,600	15,890	6.45	113,714	102,491
MO	2,142	158	1	21	2,120	5.75	12,317	12,190
MT	3,445	242	156	210	3,079	9.15	31,522	28,173
NE	8,245	515	231	834	7,180	8.45	69,670	60,671
NV	2,338	130		285	2,053	5.50	12,859	11,292
NJ	536	43	3	16	517	8.05	4,315	4,162
NM	1,764	115	14	150	1,600	6.80	11,995	10,880
NY	5,226	453	100	491	4,635	12.20	63,757	56,547
NC	2,850	245	25	111	2,714	7.70	21,945	20,898
ND	20,500	1,900	240	1,810	18,450	6.80	139,400	125,460
OH	864	65	1	11	852	8.65	7,474	7,370
OR	22,023	837	255	1,392	20,376	5.85	128,835	119,200
PA	2,750	249	10	250	2,490	11.40	31,350	28,386
RI	105	12		2	103	8.50	893	876
TX	6,094	329	36	87	5,971	12.10	73,381	71,968
VA	1,029	84	2	36	991	10.50	10,805	10,406
WA	95,480	3,900	240	6,000	89,240	5.60	534,688	499,744
WI	27,880	1,474	300	1,380	26,200	7.85	218,858	205,670
US	423,926	25,628	4,791	28,519	390,616	7.06	2,991,495	2,758,275

¹ Estimates discontinued in 2005.

Potatoes: Quantity Used for Processing, Nine States, 2003-2005 ¹

State and Crop Year	Dec 1	Jan 1	Feb 1	Mar 1	Apr 1	May 1	Jun 1	Season
	<i>1,000 Cwt</i>	<i>1,000 Cwt</i>	<i>1,000 Cwt</i>	<i>1,000 Cwt</i>	<i>1,000 Cwt</i>	<i>1,000 Cwt</i>	<i>1,000 Cwt</i>	<i>1,000 Cwt</i>
ID & OR-Mal								
2003	24,310	30,730	36,260	43,640	49,570	56,380	63,770	77,530
2004	24,360	30,840	36,820	44,610	51,000	58,090	65,800	84,600
2005	22,840	29,300	35,970	43,300	50,820	57,830	65,030	77,360
ME ²								
2003	1,590	2,085	2,720	3,420	4,095	4,740	5,400	7,270
2004	1,540	1,970	2,600	3,135	3,700	4,340	4,910	6,590
2005	1,365	1,880	2,485	3,090	3,800	4,450	5,130	6,825
WA & OR-Oth								
2003	32,670	38,520	43,610	51,210	58,500	64,160	72,350	79,800
2004	32,305	38,130	43,570	50,730	57,140	63,855	71,355	78,680
2005	30,310	35,895	40,545	48,290	55,320	61,855	69,360	78,550
Other Sts ³								
2003	13,835	16,505	19,590	22,685	25,920	29,480	32,845	42,160
2004	12,490	15,000	17,965	20,910	24,150	27,480	30,945	41,175
2005	11,055	14,070	17,005	19,895	22,520	25,270	27,740	35,535
Total								
2003	72,405	87,840	102,180	120,955	138,085	154,760	174,365	206,760
2004	70,695	85,940	100,955	119,385	135,990	153,765	173,010	211,045
2005	65,570	81,145	96,005	114,575	132,460	149,405	167,260	198,270
Dehydrated ⁴								
2003	14,250	18,440	22,050	26,090	30,290	34,630	39,070	47,750
2004	14,525	18,540	21,875	25,970	30,020	33,685	38,505	47,805
2005	11,920	15,655	19,225	22,765	26,605	30,065	34,130	41,625

¹ Total quantity received and used for processing regardless of the State in which the potatoes were produced. Amount excludes quantities used for potato chips in ME, MI, and WI.

² Includes Maine grown potatoes only.

³ CO, MN, NV, ND, and WI.

⁴ Dehydrated products except starch and flour. Included in above totals. Includes CO, ID, NV, ND, OR, WA, and WI.

**Potatoes: Number of Chip Plants, Quantity Used for Chipping, by Area
and Quantity Used for Shoestrings, United States, 2004-2005**

Area	2004		2005	
	Plants <i>Number</i>	Quantity <i>1,000 Cwt</i>	Plants <i>Number</i>	Quantity <i>1,000 Cwt</i>
New England CT, ME, MA, NH, RI, VT	3	2,628	4	2,980
Eastern ¹ DE, DC, MD, NJ, NY, PA, VA	21	11,031	20	10,645
North Central MI, OH, WV	15	4,117	15	4,290
Mid-Central KS, MO, NE	3	1,645	3	1,726
Midwest IL, IN, IA, MN, ND, SD, WI	13	8,096	13	7,879
Southeast AL, FL, GA, KY, LA MS, NC, SC, TN	12	7,967	11	8,149
Southwest AR, OK, TX	8	5,621	7	5,986
Rocky Mountains CO, ID, MT, NM, UT, WY	3	1,568	3	1,557
West Coast AK, AZ, CA, HI, NV, OR, WA	15	7,201	15	7,786
Total ¹	93	49,874	91	50,998
Shoestrings ²		194		
Total Used for Chips and Shoestrings		50,068		50,998

¹ 2005 includes shoestrings to avoid disclosure of individual firms.

² 2005 not published to avoid disclosure of individual firms.

**Potatoes: Stocks Held by Growers, Local Dealers, and Processors,
15 Fall States, 2004-2005^{1 2}**

Crop Year and State	Current Year	Following Year ³					
	Dec 1	Jan 1	Feb 1	Mar 1	Apr 1	May 1	Jun 1
	<i>1,000 Cwt</i>	<i>1,000 Cwt</i>	<i>1,000 Cwt</i>	<i>1,000 Cwt</i>	<i>1,000 Cwt</i>	<i>1,000 Cwt</i>	<i>1,000 Cwt</i>
2004							
CA	3,000	2,300	1,800	1,500	900	500	
CO	18,000	15,800	13,700	11,900	9,000	6,000	3,600
ID	93,500	84,500	75,000	64,000	52,000	38,500	24,000
ME	15,000	12,800	11,100	9,400	7,500	5,000	2,900
MI	8,000	6,300	4,800	3,600	2,200	900	
MN	13,000	11,600	10,200	8,800	6,500	5,100	3,500
MT	3,500	3,400	3,350	2,400	1,900	500	
NE	6,300	5,300					
NY	2,300	1,600	1,200	700	300		
ND	19,600	17,500	15,300	13,100	10,300	7,200	4,800
OH	200	100					
OR	17,000	14,500	11,800	9,000	6,200	3,900	2,100
PA	1,600	1,100	900	700	500		
WA	50,000	43,000	36,500	29,000	22,000	15,500	8,000
WI	20,100	16,900	13,600	10,700	7,200	3,800	1,600
Other Sts			4,240	3,220	2,400	1,650	1,200
Total 15 Sts	271,100	236,700	203,490	168,020	128,900	88,550	51,700
2005 ⁴							
CA	1,600	1,300	1,100	900	700	400	260
CO	17,200	15,000	12,900	11,200	8,800	5,700	3,300
ID	85,000	75,500	66,000	56,000	43,500	31,000	18,500
ME	12,500	11,200	9,700	8,400	6,500	4,300	2,500
MI	7,900	6,200	4,500	3,100	1,700	500	
MN	13,500	11,100	9,000	7,100	4,500	2,700	2,000
MT	3,400	3,300	3,300	3,200	1,900		
NE	5,600	4,700	3,900	3,300	2,200	1,200	
NY	2,900	2,200	1,700	1,200	500		
ND	14,000	11,500	9,400	7,200	5,300	3,200	1,300
OH ⁵							
OR	19,000	16,500	14,500	11,500	8,500	5,000	2,300
PA ⁵							
WA	52,500	46,500	40,500	32,500	25,000	17,500	9,400
WI	18,700	15,500	12,600	9,900	6,600	3,900	1,300
Other Sts						500	700
Total 13 Sts	253,800	220,500	189,100	155,500	115,700	75,900	41,560

¹ Stocks are defined as the quantity (whether sold or not) remaining in storage for all purposes and uses, including seed potatoes that are not yet moved, and shrinkage, waste, and other losses that occur after the date of each estimate.

² 13 fall storage States for 2005.

³ Missing stocks combined into "Other Sts" to avoid disclosure of individual operations.

⁴ Revised.

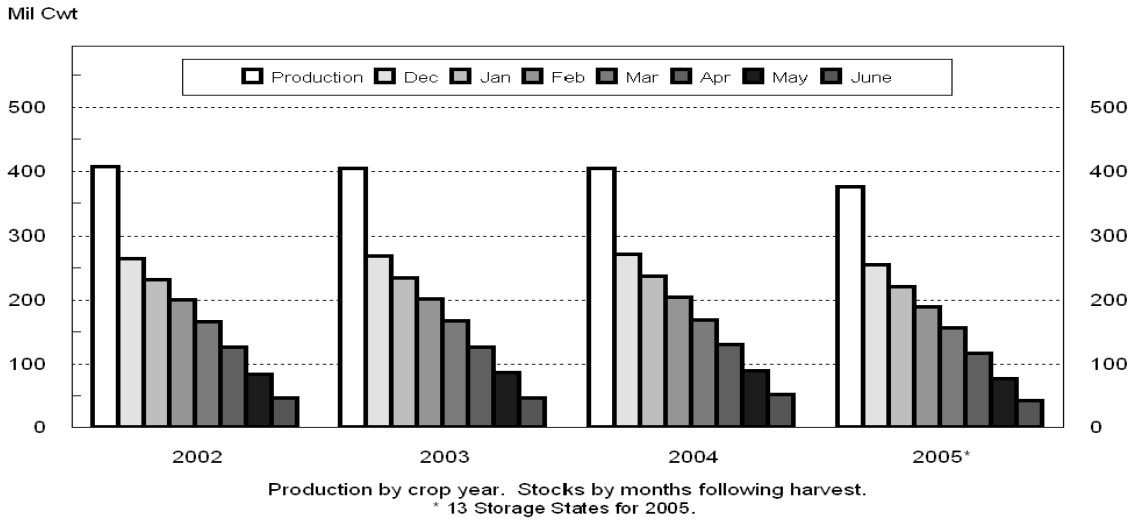
⁵ Stock estimates discontinued in 2005.

Potatoes: Shrinkage and Loss, 15 Fall Storage States, U.S. 2003-2005

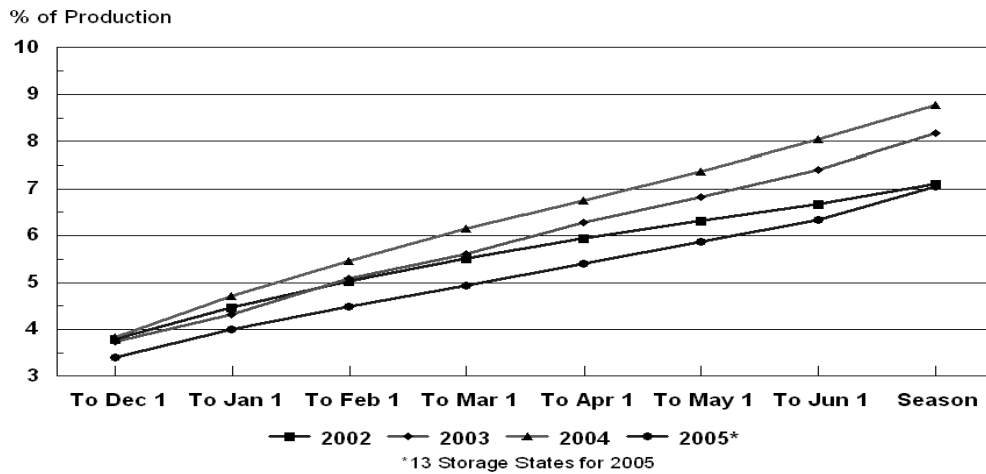
Crop Year	To Dec 1	To Jan 1	To Feb 1	To Mar 1	To Apr 1	To May 1	Total Jun 1	Season
	<i>Million Cwt</i>	<i>Million Cwt</i>	<i>Million Cwt</i>	<i>Million Cwt</i>	<i>Million Cwt</i>	<i>Million Cwt</i>	<i>Million Cwt</i>	<i>Million Cwt</i>
2003	15.0	17.4	20.5	22.6	25.4	27.5	29.9	33.0
2004	15.5	19.1	22.0	24.8	27.3	29.7	32.5	35.4
2005 ¹	12.7	15.0	16.8	18.4	20.2	22.0	23.7	26.4

¹ 13 storage States.

Fall Potatoes: Production and Stocks 15 Storage States



Fall Potatoes: Shrink and Loss 15 Storage States



**Fall Potatoes: Farm Marketings, Selected States,
2003-2005 Marketing Years**

State	Crop Year	Jul	Aug	Sep	Oct	Nov	Dec	Jan	Feb	Mar	Apr	May	Jun	Jul
		<i>Percent</i>	<i>Percent</i>	<i>Percent</i>	<i>Percent</i>	<i>Percent</i>	<i>Percent</i>	<i>Percent</i>	<i>Percent</i>	<i>Percent</i>	<i>Percent</i>	<i>Percent</i>	<i>Percent</i>	<i>Percent</i>
CA	2003				13	12	15	14	9	8	10	7	12	
	2004				8	9	21	13	8	14	12	7	8	
	2005				4	14	22	10	11	12	12	8	7	
CO	2003			6	8	9	10	11	9	12	14	8	7	6
	2004			5	7	9	10	10	8	12	10	11	11	7
	2005			5	8	10	10	10	8	11	10	12	10	6
ID	2003		4	8	10	11	8	7	8	10	11	11	6	6
	2004		6	9	10	11	7	6	6	9	10	9	10	7
	2005		2	11	13	8	7	8	7	11	10	10	6	7
ME	2003		1	5	11	8	9	10	10	11	15	10	6	4
	2004		1	9	6	7	10	10	10	11	15	10	7	4
	2005			5	11	8	9	10	9	12	15	10	6	5
MI	2003	1	7	8	11	11	11	10	8	13	12	8		
	2004	1	10	11	11	12	12	11	8	10	9	5		
	2005	1	8	11	13	12	12	12	10	10	8	3		
MN	2003		9	10	10	9	6	5	6	9	10	9	9	8
	2004		9	8	8	6	6	7	8	13	7	9	10	9
	2005		7	6	4	7	15	12	12	14	9	3	6	5
NY	2003		1	8	29	20	17	8	7	6	4			
	2004		4	16	19	16	13	10	9	8	5			
	2005		2	14	14	12	13	10	12	14	7	2		
ND	2003			23	10	6	7	6	9	7	11	10	9	2
	2004		1	20	9	6	6	8	7	11	11	7	8	6
	2005		2	25	13	5	9	9	9	8	10	7	2	1
OR	2003		10	9	19	9	8	7	7	7	8	8	5	3
	2004		12	11	16	8	6	4	9	10	9	8	4	3
	2005		17	10	13	5	7	5	8	9	10	8	4	4
PA	2003		15	18	14	11	10	10	9	6	5	2		
	2004	1	18	16	15	8	15	8	6	5	6	2		
	2005 ¹													
WA	2003		16	12	22	7	6	5	7	6	6	7	5	1
	2004		18	14	21	6	5	5	7	6	6	6	5	1
	2005		14	13	23	7	6	4	6	7	7	7	5	1
WI	2003	1	6	12	12	12	10	9	10	10	9	7	2	
	2004		6	14	12	12	9	9	9	11	10	6	2	
	2005	1	6	16	11	10	10	9	9	10	8	8	2	
US	2003		7	10	14	10	8	7	8	9	10	9	5	3
	2004		9	11	13	9	7	7	7	9	9	8	7	4
	2005		7	12	14	8	8	8	8	10	9	8	5	4

¹ Farm marketing estimates discontinued in 2005.

All Potatoes: Farm Marketings, United States, 1996-2005

Month	Marketing Year									
	1996	1997	1998	1999	2000	2001	2002	2003	2004	2005
	<i>Percent</i>	<i>Percent</i>	<i>Percent</i>	<i>Percent</i>	<i>Percent</i>	<i>Percent</i>	<i>Percent</i>	<i>Percent</i>	<i>Percent</i>	<i>Percent</i>
Nov		0.1				0.1	0.1	0.1		
Dec		0.1	0.1		0.2	0.1	0.1	0.1	0.1	0.1
Jan	0.1	0.1	0.1	0.2	0.1	0.2	0.2	0.1	0.2	0.2
Feb	0.1	0.2	0.1	0.2	0.2	0.3	0.3	0.2	0.3	0.3
Mar	0.2	0.2	0.3	0.4	0.3	0.2	0.3	0.3	0.3	0.5
Apr	0.7	0.8	0.4	0.8	0.7	0.8	0.5	0.4	0.7	0.7
May	1.7	1.9	1.8	1.9	1.5	2.0	2.0	1.8	1.9	1.4
Jun	2.5	2.1	2.2	2.5	2.1	2.2	2.1	2.9	2.7	2.2
Jul	2.0	2.2	1.9	2.1	2.2	1.8	2.0	2.1	1.8	1.9
Aug	9.2	7.1	8.1	7.3	7.9	6.1	7.9	7.3	8.6	6.9
Sep	13.0	12.8	10.6	11.3	10.7	11.4	9.6	9.8	10.8	11.0
Oct	19.0	16.5	17.6	16.2	13.5	14.6	12.3	12.7	11.8	13.4
Nov	7.8	8.0	7.4	7.0	7.8	8.1	9.1	8.7	8.1	7.2
Dec	5.2	6.8	6.3	6.9	5.8	6.7	6.6	7.3	6.6	7.5
Jan	6.0	6.8	6.7	6.3	6.7	6.8	6.9	6.5	6.2	6.9
Feb	6.2	6.1	6.4	6.5	6.1	7.5	7.1	7.3	6.5	7.0
Mar	7.6	7.1	7.6	7.6	7.7	8.1	8.1	7.9	8.2	9.0
Apr	7.2	6.7	7.4	7.9	7.7	8.3	8.6	8.6	8.1	8.3
May	6.1	6.5	6.9	7.0	8.3	7.4	7.9	7.9	6.9	7.5
Jun	4.1	4.9	5.4	5.0	6.2	4.6	5.1	4.9	6.4	4.6
Jul	1.3	3.0	2.7	2.9	4.3	2.7	3.2	3.1	3.8	3.4
Total	100.0	100.0	100.0	100.0	100.0	100.0	100.0	100.0	100.0	100.0

**Potatoes: Area, Yield, Production, Farm Disposition, Price,
and Value, Alaska, 2003-2005**

Crop Year	Area		Yield per Cwt	Production			
	Planted	Harvested					
	<i>Acres</i>	<i>Acres</i>	<i>Cwt</i>	<i>Cwt</i>			
2003	930	800	210	168,000			
2004	870	810	219	177,000			
2005	830	780	213	166,000			
	Total Used for Seed	Farm Disposition			Price per Cwt	Value	
		Where Grown		Sold		Prod	Sales
		Seed Feed, Home	Shrink and Loss				
	<i>1,000 Cwt</i>	<i>1,000 Cwt</i>	<i>1,000 Cwt</i>	<i>1,000 Cwt</i>	<i>Dollars</i>	<i>1,000 Dollars</i>	<i>1,000 Dollars</i>
2003	17.0	18.0	45.0	105.0	19.70	3,310	2,069
2004	17.0	18.0	43.0	116.0	19.60	3,469	2,274
2005	16.0	18.0	33.0	115.0	20.50	3,403	2,358

**Potatoes: Total Stocks Held by Growers and Local Dealers,
Alaska, 2003-2005**

Crop Year	Oct 1 Current Year	Dec 1 Current Year	Jan 1 Following Year	Feb 1 Following Year
	<i>1,000 Cwt</i>	<i>1,000 Cwt</i>	<i>1,000 Cwt</i>	<i>1,000 Cwt</i>
2003	147.0	110.0	90.0	71.0
2004	154.0	137.0	126.0	114.0
2005	145.0	129.0	118.0	106.0
	Mar 1 Following Year	Apr 1 Following Year	May 1 Following Year	Jun 1 Following Year
	<i>1,000 Cwt</i>	<i>1,000 Cwt</i>	<i>1,000 Cwt</i>	<i>1,000 Cwt</i>
2003	62.0	52.0	32.0	11.0
2004	106.0	93.0	70.0	43.0
2005	93.0	80.0	61.0	32.0

**Potatoes: Marketing Year Average Price Received,
by States and United States, 2004 and 2005 ¹**

State	2004	2005	State	2004	2005
	<i>Dollars per Cwt</i>	<i>Dollars per Cwt</i>		<i>Dollars per Cwt</i>	<i>Dollars per Cwt</i>
AL	6.60	8.55	NE	5.20	8.45
AK	19.60	20.50	NV	4.05	5.50
AZ	12.40	11.50	NJ	5.50	8.05
CA - All	14.30	13.50	NM	5.30	6.80
Winter	22.70	19.10	NY	8.25	12.20
Spring	13.40	13.00	NC	5.95	7.70
Summer	14.50	14.40	ND - All	5.80	6.80
Fall	7.95	7.35	Fresh	6.10	10.30
CO - All	4.70	8.65	Processing	5.65	5.80
Fresh	4.70	9.45	OH	7.35	8.65
DE	7.00	8.65	OR	5.10	5.85
FL	10.60	14.40	PA	7.45	11.40
ID - All	4.25	5.70	RI	7.65	8.50
Fresh	3.40	6.90	TX	8.50	12.10
Processing	4.50	4.90	VA	7.90	10.50
IL	5.05	6.10	WA - All	4.90	5.60
IN ²	6.10		Processing	4.60	4.90
KS	7.05	7.70	WI - All	5.75	7.85
ME	6.50	8.25	Fresh	4.90	8.85
MD	7.50	8.30	Processing	6.25	6.55
MA	6.60	8.80			
MI	6.95	7.90	US - All	5.66	7.06
MN	5.45	6.45	Fresh	6.75	10.36
MO	5.45	5.75	Processing	5.06	5.39
MT	7.50	9.15			

¹ State Marketing Year Average Prices are computed by weighting State monthly prices by estimated sales for the month during the crop year. U.S. Marketing Year Average Price is computed by weighting State Marketing Year Average Prices by estimated sales for the crop year.

² Estimates discontinued in 2005.

**Potatoes: Prices Received by Farmers, Monthly
by State and United States, 2004 ¹**

State	Jan	Feb	Mar	Apr	May	Jun
	<i>Dollars per Cwt</i>	<i>Dollars per Cwt</i>	<i>Dollars per Cwt</i>	<i>Dollars per Cwt</i>	<i>Dollars per Cwt</i>	<i>Dollars per Cwt</i>
AL						7.30
AZ				17.80	10.90	9.80
CA - All	15.60	17.30	21.10	21.00	14.20	12.40
Winter	20.20	20.20	29.70	25.20		
Spring					14.60	12.80
Summer						
Fall	8.95	8.90	9.15	9.55	9.40	9.15
CO - All	4.95	4.70	5.00	4.65	4.00	3.70
Fresh	4.80	4.60	4.35	4.20	4.15	3.95
FL		20.50	25.00	14.50	8.15	7.65
ID - All	4.10	4.05	4.30	4.95	5.00	4.05
Fresh	3.70	3.40	3.80	3.70	3.60	3.50
Processing	4.30	4.40	4.00	4.40	4.50	4.30
ME	5.80	5.70	6.10	6.30	6.75	7.05
MI	7.15	7.40	7.90	8.60	8.65	
MN	5.15	5.05	5.05	5.15	4.95	4.70
NY	8.95	8.90	9.45	9.30		
NC						5.95
ND - All	5.80	5.60	5.90	5.70	5.60	5.70
Fresh	5.40	5.15	4.60	4.00	3.15	3.15
Processing	5.90	5.60	6.00	5.70	5.85	5.80
OH	6.40	6.00	5.10	8.70		
OR	5.30	5.60	6.70	6.65	6.40	5.65
PA	7.80	7.35	7.00	7.30	8.30	
TX					7.20	7.55
VA						7.00
WA - All	5.85	5.75	5.80	6.25	5.60	5.95
Processing	5.15	5.40	5.45	5.65	5.40	5.45
WI - All	5.60	6.25	5.70	6.10	6.15	5.15
Fresh	4.10	3.80	3.80	3.85	3.30	3.30
Processing	6.40	7.25	6.40	7.30	8.00	7.00
US - All	5.70	5.87	6.09	6.62	6.47	6.47
Fresh	6.26	6.68	7.20	7.82	7.76	9.04
Processing	5.29	5.24	5.24	5.54	5.64	5.54

See footnote(s) at end of table.

--continued

**Potatoes: Prices Received by Farmers, Monthly
by State and United States, 2004 ¹ (continued)**

State	Jul	Aug	Sep	Oct	Nov	Dec
	<i>Dollars per Cwt</i>	<i>Dollars per Cwt</i>	<i>Dollars per Cwt</i>	<i>Dollars per Cwt</i>	<i>Dollars per Cwt</i>	<i>Dollars per Cwt</i>
AL	6.10	6.25				
AZ						
CA - All	13.20	14.30	15.00	9.20	8.65	10.30
Winter					15.80	15.80
Spring	13.00					
Summer	13.80	14.30	15.00	15.10		
Fall				7.65	7.85	7.90
CO - All	3.50	7.05	6.00	5.40	4.80	4.55
Fresh	3.80	7.15	6.55	5.80	4.85	4.55
FL						
ID - All	4.00	5.05	4.40	4.10	4.15	3.90
Fresh	3.50	5.50	4.20	3.30	3.60	3.50
Processing	4.30	4.90	4.50	4.50	4.40	4.10
ME	7.05	5.90	5.15	5.65	6.15	6.35
MI	7.35	5.80	5.50	5.80	6.80	6.95
MN	4.75	6.15	6.15	5.65	5.70	5.55
NY		9.20	9.20	8.90	7.35	7.35
NC	5.90					
ND - All	5.60	5.70	5.20	5.35	5.85	5.95
Fresh		9.40	6.20	6.10	6.15	6.40
Processing	5.60	5.40	5.00	5.00	5.65	5.70
OH	10.50	7.65	6.70	7.30	7.60	7.10
OR	5.45	4.60	4.35	4.35	4.70	4.95
PA	7.60	6.75	6.80	7.20	7.20	7.90
TX	8.95	8.50	11.00			
VA	8.20	7.05				
WA - All	5.55	5.10	4.45	4.25	4.75	5.20
Processing	6.20	4.45	4.15	4.10	4.55	5.10
WI - All		6.25	5.50	4.70	5.10	5.80
Fresh		7.10	5.90	4.20	4.80	5.40
Processing		5.00	5.15	5.50	5.50	6.15
US - All	6.44	5.60	5.23	4.61	4.89	5.28
Fresh	9.07	7.87	6.97	5.09	4.89	5.56
Processing	5.30	4.76	4.60	4.45	4.88	5.10

¹ Monthly prices refer to all potatoes sold in a given month regardless of the year harvested.

**Potatoes: Prices Received by Farmers, Monthly
by State and United States, 2005 ¹**

State	Jan	Feb	Mar	Apr	May	Jun
	<i>Dollars per Cwt</i>	<i>Dollars per Cwt</i>	<i>Dollars per Cwt</i>	<i>Dollars per Cwt</i>	<i>Dollars per Cwt</i>	<i>Dollars per Cwt</i>
AL						12.20
AZ				22.10	13.00	8.40
CA - All	14.40	15.20	15.50	16.80	12.80	12.40
Winter	17.80	18.00	20.70	21.40		
Spring					13.60	12.80
Summer						
Fall	7.90	7.90	7.90	8.00	8.20	8.65
CO - All	4.65	4.30	4.50	4.70	4.25	4.15
Fresh	4.55	4.25	4.15	4.30	4.35	4.40
FL		25.50	27.60	13.50	10.80	11.80
ID - All	4.10	4.05	4.25	4.40	4.45	4.15
Fresh	3.10	2.60	2.70	2.30	2.80	3.40
Processing	4.60	4.60	4.40	4.40	4.60	4.50
ME	5.90	6.55	6.60	6.95	7.30	7.40
MI	7.15	7.50	7.95	8.75	8.75	
MN	5.75	5.55	5.75	5.00	4.85	4.75
NY	7.75	7.85	8.40	8.40		
NC						7.70
ND - All	5.55	6.20	6.10	6.35	5.85	5.85
Fresh	6.25	5.95	5.45	5.45	6.00	5.85
Processing	5.10	6.10	6.25	6.00	6.20	5.95
OH ²	6.90	7.20	7.25			
OR	4.90	4.80	5.80	6.35	6.90	5.95
PA ²	8.40	7.45	8.00	8.65	8.70	
TX					9.50	10.00
VA						9.15
WA - All	5.35	5.45	5.35	4.90	5.10	5.80
Processing	5.15	5.25	5.20	4.70	5.05	5.35
WI - All	5.75	5.90	6.70	6.50	6.15	
Fresh	5.15	4.35	3.55	3.35	3.40	
Processing	6.30	6.20	7.40	7.70	7.55	
US - All	5.64	5.79	6.44	6.20	6.23	6.30
Fresh	6.13	6.58	8.04	7.22	7.43	8.23
Processing	5.29	5.30	5.37	5.47	5.68	5.51

See footnote(s) at end of table.

--continued

**Potatoes: Prices Received by Farmers, Monthly
by State and United States, 2005 ¹ (continued)**

State	Jul	Aug	Sep	Oct	Nov	Dec
	<i>Dollars per Cwt</i>	<i>Dollars per Cwt</i>	<i>Dollars per Cwt</i>	<i>Dollars per Cwt</i>	<i>Dollars per Cwt</i>	<i>Dollars per Cwt</i>
AL	7.20	8.30				
AZ	8.85	14.30				
CA - All	13.30	14.40	14.40	8.30	9.80	9.35
Winter					17.40	17.10
Spring	12.80					
Summer	14.40	14.40	14.40	14.40		
Fall				7.20	7.20	7.20
CO - All	4.75	7.65	10.10	9.00	8.05	8.25
Fresh	5.00	8.45	10.70	9.70	8.70	8.95
FL						
ID - All	4.15	4.90	5.00	4.95	5.20	5.25
Fresh	3.70	5.60	7.60	7.00	6.60	6.10
Processing	4.40	4.60	4.40	4.50	4.50	4.80
ME	7.70		5.85	6.30	7.90	8.20
MI	8.30	6.10	5.80	6.90	7.40	7.90
MN	4.85	9.60	7.35	6.65	6.25	6.40
NY		11.30	11.40	11.30	11.90	12.00
NC	7.70					
ND - All	6.50	5.50	5.65	6.65	6.45	7.25
Fresh		8.80	8.70	9.40	9.60	10.30
Processing	6.50	4.95	5.05	5.80	5.30	6.30
OH ²						
OR	5.50	5.15	4.80	4.70	5.55	5.70
PA ²						
TX	14.40	12.20	10.50			
VA	10.80	9.50				
WA - All	5.35	5.55	4.95	4.60	5.45	6.25
Processing	5.50	4.50	4.30	4.35	4.60	5.55
WI - All		7.60	6.15	7.20	7.15	8.90
Fresh		9.30	9.20	9.50	9.20	9.45
Processing		5.10	5.10	5.30	4.80	7.10
US - All	7.05	6.61	5.69	5.37	6.26	6.83
Fresh	10.37	11.30	10.77	8.90	8.76	9.03
Processing	5.45	4.92	4.65	4.66	4.89	5.51

¹ Monthly prices refer to all potatoes sold in a given month regardless of the year harvested.

² Monthly price estimates discontinued July 2005.

Fall Potatoes: Percent of Varieties Planted, 2004-2005

The National Agricultural Statistics Service conducts variety surveys in 8 States, accounting for 89 percent of the U.S. fall potato production for both the 2004 and 2005 crops. Colorado data are from a growers potato variety survey. The remaining 7 States conduct objective yield surveys where all producing areas are sampled in proportion to planted acreage. Variety data are actual percentages from these surveys.

Fall Potatoes: Percent of Major Varieties Planted, Selected States and 8 States Total, 2004 Crop

State and Varieties	Pct. of Planted Acres	State and Varieties	Pct. of Planted Acres
CO		MN	
R Norkotah	57.6	R Burbank	51.2
Yukon Gold	9.0	Norland	23.2
R Nugget	7.8	Yukon Gold	3.6
Centennial R	7.1	Shepody	2.9
Rio Grande R	3.4	Red Pontiac	2.6
Keystone R	1.1	Dakota Pearl	2.5
Other	14.0	Cascade	2.4
		Dakota Rose	2.1
Total	100.0	Sangre	1.6
ID		R Norkotah	1.5
R Burbank	63.3	Atlantic	1.3
R Norkotah	14.2	Goldrush	1.2
Ranger R	12.5	Other	3.9
Alturas	2.9	Total	100.0
Shepody	1.7	ND	
Other	5.4	R Burbank	40.0
Total	100.0	Shepody	16.5
ME		Frito-Lay	14.7
R Burbank	36.7	Norland	8.3
Frito-Lay	11.5	Ranger R	4.2
Shepody	9.3	Dakota Pearl	4.1
Ontario	5.5	NorValley	2.2
Yukon Gold	3.3	Red Pontiac	1.8
Superior	3.0	Red LaSoda	1.8
R Norkotah	3.0	Alturas	1.2
Atlantic	3.0	Sangre	1.0
Katahdin	2.5	Other	4.2
Norland	2.5	Total	100.0
Snowden	2.3		
Norwis	2.2		
Goldrush	1.9		
Reba	1.7		
Monona	1.7		
Chieftain	1.3		
Centennial R	1.2		
Mainstay	1.0		
Other	6.4		
Total	100.0		

--continued

**Fall Potatoes: Percent of Major Varieties Planted,
Selected States and 8 States Total, 2004 Crop (Continued)**

State and Varieties	Pct. of Planted Acres	State and Varieties	Pct. of Planted Acres
OR		TOTAL(8 States)	
Ranger R	31.3	R Burbank	43.7
R Burbank	22.8	R Norkotah	14.3
R Norkotah	16.3	Ranger R	10.0
Shepody	10.3	Shepody	5.3
Alturas	7.2	Frito-Lay	4.8
Frito-Lay	6.0	Norland	3.5
Yukon Gold	1.1	Alturas	2.2
Other	5.0	Umatilla R	2.0
		Yukon Gold	1.6
Total	100.0	Goldrush	1.0
WA		Superior	0.7
R Burbank	34.7	Dakota Pearl	0.6
Ranger R	18.5	Centennial R	0.6
R Norkotah	12.9	R Nugget	0.6
Umatilla R	10.7	Snowden	0.6
Shepody	8.2	Atlantic	0.5
Alturas	3.5	Chieftain	0.5
Chieftain	2.4	Silverton R	0.4
Frito-Lay	1.8	Red LaSoda	0.4
Yukon Gold	1.5	Ontario	0.4
Pike	1.0	Red Pontiac	0.3
Other	4.8	NorValley	0.3
		Pike	0.3
Total	100.0	Cascade	0.3
WI		Gem R	0.2
R Burbank	23.3	Rio Grande R	0.2
Frito-Lay	18.4	Sangre	0.2
R Norkotah	16.7	CalWhite	0.2
Norland	11.7	Katahdin	0.2
Goldrush	10.7	Norwis	0.2
Superior	6.0	Monona	0.1
Silverton R	5.1	Reba	0.1
Snowden	2.6	NorDonna	0.1
Atlantic	1.3	Dakota Rose	0.1
Pike	1.2	Chipeta	0.1
Other	3.0	Viking	0.1
		Keystone R	0.1
Total	100.0	Ivory Crisp	0.1
		Mainstay	0.1
		Kennebec	0.1
		Kanona	0.1
		La Chipper	0.1
		Molli	0.1
		Amisk	0.1
		Andover	0.1
		Other	2.4
		Total	100.0

**Fall Potatoes: Percent of Major Varieties Planted,
Selected States and 8 States Total, 2005 Crop**

State and Varieties	Pct. of Planted Acres	State and Varieties	Pct. of Planted Acres
CO		MN	
R Norkotah	56.1	R Burbank	58.2
Yukon Gold	8.0	Norland	23.8
Rio Grande R	7.7	Sangre	2.0
R Nugget	6.4	Dakota Pearl	2.0
Centennial R	4.6	Dakota Rose	1.8
Cherry Red	0.8	Goldrush	1.6
Sangre	0.8	Cascade	1.3
Keystone R	0.7	Alturas	1.2
Silverton R	0.7	Red Pontiac	1.1
Latonia	0.7	Chieftan	1.0
Other	13.5	Other	6.0
Total	100.0	Total	100.0
ID		ND	
R Burbank	63.1	R Burbank	56.8
Ranger R	15.1	Norland	6.9
R Norkotah	11.8	Ranger R	5.3
Alturas	2.8	Shepody	5.2
Shepody	1.3	Frito-Lay	4.6
Other	5.9	Yukon Gold	4.6
Total	100.0	Dakota Pearl	4.4
ME		NorValley	2.3
R Burbank	42.5	Umatilla R	1.6
Frito-Lay	17.1	Sangre	1.4
Shepody	7.2	Atlantic	1.3
Atlantic	3.5	Other	5.6
Superior	3.4	Total	100.0
Yukon Gold	2.8	OR	
Ontario	2.8	Ranger R	25.3
Goldrush	2.7	R Norkotah	23.8
Norwis	2.4	Shepody	17.1
Katahdin	2.4	R Burbank	15.2
Norland	2.3	Alturas	7.7
Snowden	2.2	Frito-Lay	2.5
R Norkotah	1.6	Umatilla R	2.1
Reba	1.4	Yukon Gold	1.5
Monona	1.0	Other	4.8
Other	4.7	Total	100.0
Total	100.0		

--continued

**Fall Potatoes: Percent of Major Varieties Planted,
Selected States and 8 States Total, 2005 Crop (Continued)**

State and Varieties	Pct. of Planted Acres	State and Varieties	Pct. of Planted Acres
WA		TOTAL(8 States)	
R Burbank	40.6	R Burbank	46.5
Ranger R	16.0	R Norkotah	13.8
R Norkotah	14.4	Ranger R	10.5
Umatilla R	10.8	Norland	3.5
Shepody	4.7	Frito-Lay	3.4
Alturas	3.3	Shepody	3.2
Chieftain	3.0	Umatilla R	2.5
Yukon Gold	1.2	Alturas	2.1
Other	6.0	Yukon Gold	1.7
		Goldrush	1.3
Total	100.0	Atlantic	0.7
		Dakota Pearl	0.6
WI		Snowden	0.6
R Burbank	19.2	Chieftain	0.6
R Norkotah	18.1	R Nugget	0.6
Frito-Lay	17.8	Rio Grande R	0.5
Goldrush	12.3	Silverton R	0.5
Norland	11.8	Superior	0.5
Silverton R	6.0	Sangre	0.3
Snowden	4.6	Centennial R	0.3
Superior	3.6	NorValley	0.3
Atlantic	2.2	Bannock	0.3
Pike	1.0	Cascade	0.2
Other	3.4	Red LaSoda	0.2
		Ontario	0.2
Total	100.0	Viking Purple	0.2
		Pike	0.2
		Norwis	0.2
		Katahdin	0.2
		Summit	0.2
		Red Pontiac	0.1
		NorDonna	0.1
		CalRed	0.1
		Dakota Rose	0.1
		Viking	0.1
		Reba	0.1
		Ivory Crisp	0.1
		Monona	0.1
		Chipeta	0.1
		Andover	0.1
		Sierra Gold	0.1
		Cherry Red	0.1
		Other	2.9
		Total	100.0

**Fall Potatoes: Percent of Acreage Planted by Type of Potatoes,
11 Major States, 2004-2005 ¹**

State	Potato Types					
	Reds		Whites		Russets	
	2004	2005	2004	2005	2004	2005
	<i>Percent</i>	<i>Percent</i>	<i>Percent</i>	<i>Percent</i>	<i>Percent</i>	<i>Percent</i>
CO	5	4	13	11	82	85
ID	2	2	3	3	95	95
ME	5	3	51	50	44	47
MI	3	2	84	83	13	15
MN	23	25	11	9	66	66
NY	5	5	90	90	5	5
ND	17	20	39	32	44	48
OR	4	2	22	14	74	84
PA	4	6	96	94		
WA	3	3	9	10	88	87
WI	11	11	32	32	57	57
Total	6	6	21	20	73	74

¹ Predominant type shown may include small portion of other type(s) constituting less than 1 percent of State's total. Yellow flesh potatoes are reported under white types. Blue types are reported under red types.

**Fall Potatoes: Acres Planted for Certified Seed Potatoes,
by State and Total, 2004-2005 ¹**

State	2004 Crop			2005 Crop		
	Entered for Certification	Certified	Percent Certified	Entered for Certification	Certified	Percent Certified
	<i>Acres</i>	<i>Acres</i>		<i>Acres</i>	<i>Acres</i>	
AK	130	86	66	205	195	95
CA	557	524	94	525	446	85
CO	14,884	12,345	83	15,289	12,813	84
ID	36,924	36,729	99	31,626	30,969	98
ME	13,533	13,523	100	11,599	11,466	99
MI	2,300	2,221	97	2,300	2,167	94
MN	10,552	10,100	96	9,683	9,094	94
MT	9,758	9,758	100	9,900	9,675	98
NE	6,592	5,592	85	6,007	5,985	100
NY	786	785	100	807	806	100
ND	16,746	16,600	99	12,849	12,610	98
OR	3,216	3,216	100	2,251	2,251	100
PA	284	284	100	260	259	100
WA	2,490	2,488	100	2,360	2,360	100
WI	8,515	8,150	96	8,489	8,173	96
Total	127,267	122,401	96	114,150	109,269	96

¹ Data supplied by State seed certification officials.

2005 Potato Objective Yield Survey

The National Agricultural Statistics Service conducted potato objective yield surveys in the 7 major fall producing States in 2005. These 7 States account for 83 percent of the fall potato production. Sample plots were located in potato fields that were selected on a random basis using a scientifically designed sampling procedure. Field workers recorded counts and measurements. Survey data from the objective yield counts are presented in the following two tables and are provided to show information about the crop and trends in production.

Potatoes: Harvest Loss by Type, Seven Objective Yield States, 2004-2005^{1 2}

State	Crop Year	Reds	Whites	Russets	All Types
		<i>Cwt per Acre</i>	<i>Cwt per Acre</i>	<i>Cwt per Acre</i>	<i>Cwt per Acre</i>
ID	2004			25	25
	2005			28	28
ME	2004		23	30	25
	2005	9	15	15	14
MN	2004	28	21	27	26
	2005	19	10	28	23
ND	2004		21	32	25
	2005	15	17	52	37
OR	2004		14	30	27
	2005		18	27	26
WA	2004		14	26	24
	2005			22	22
WI	2004		10	24	18
	2005		15	12	13

¹ Potatoes left in the field at time of harvest. Based on counts in potato fields selected for postharvest samples.

² Missing data represents insufficient number of samples.

Potatoes: Number of Hills by Type, Seven Objective Yield States, 2004-2005 ¹

State	Crop Year	Reds		Whites		Russets	
		Number of Samples	Avg No. Hills per Acre	Number of Samples	Avg No. Hills per Acre	Number of Samples	Avg No. Hills per Acre
ID	2004	4	16,372	13	12,747	259	12,628
	2005	5	13,665	9	12,740	265	12,502
ME	2004	6	12,598	77	13,495	62	10,012
	2005	7	13,005	66	12,240	79	9,007
MN	2004	34	13,649	18	11,700	82	12,601
	2005	44	11,272	8	11,011	94	12,589
ND	2004	19	11,435	58	11,134	68	12,007
	2005	20	9,540	40	10,516	101	11,938
OR	2004	3	9,585	19	14,917	79	13,995
	2005	3	15,278	22	13,727	80	13,879
WA	2004	6	17,155	26	16,739	146	15,306
	2005	5	15,184	14	15,193	167	15,009
WI	2004	11	13,513	41	14,554	68	12,559
	2005	15	15,501	33	15,319	80	13,119

¹ Based on row measurements and counts in potato fields selected for objective yield samples.

Potato Size and Grade

Size and grade measurements came from potatoes harvested in the objective yield survey sample plots. Potatoes were harvested from six hills per sample randomly selected in each State using a scientifically designed sampling procedure. Potatoes were sent to laboratories for sizing and grading according to accepted U.S. fresh grading standards. The following tables contain percent measurements as they actually occurred.

Grading Categories of Potatoes ¹

Type and State	No. 1 2 Inch Minimum ²		No. 2 or Processing Usable 1 1/2 Inch Minimum ³		Cull ⁴		Total	
	2004	2005	2004	2005	2004	2005	2004	2005
	<i>Percent</i>	<i>Percent</i>	<i>Percent</i>	<i>Percent</i>	<i>Percent</i>	<i>Percent</i>	<i>Percent</i>	<i>Percent</i>
Round Red Potatoes								
MN	81.0	70.7	14.6	20.6	4.4	8.7	100.0	100.0
Round White Potatoes								
ME ⁵	85.5	83.2	7.9	8.1	6.6	8.7	100.0	100.0
ND ⁶	86.4		8.8		4.8		100.0	
WI	80.0	75.5	19.9	24.1	0.1	0.4	100.0	100.0
Long Potatoes: (Russet and Shepody)								
ID ⁷	78.6	74.8	20.9	24.0	0.5	1.2	100.0	100.0
ME ⁵	70.2	74.8	12.4	15.3	17.4	9.9	100.0	100.0
MN	77.0	72.2	19.9	22.2	3.1	5.6	100.0	100.0
ND	77.8	72.1	17.5	19.0	4.7	8.9	100.0	100.0
OR	78.2	77.7	21.2	21.2	0.6	1.1	100.0	100.0
WA	82.6	81.7	16.7	17.1	0.7	1.2	100.0	100.0
WI	79.9	81.3	20.0	18.6	0.1	0.1	100.0	100.0

¹ Gross yield basis.

² Potatoes which meet the requirements for US #1, as stated in United States Standards for Grades of Potatoes, United States Department of Agriculture, Agricultural Marketing Service.

³ Potatoes which meet the requirements for US #2, as stated in United States Standards for Grades of Potatoes, United States Department of Agriculture, Agricultural Marketing Service.

⁴ Potatoes not meeting the requirements for US #1 or US #2, as stated in United States Standards for Grades of Potatoes, United States Department of Agriculture, Agricultural Marketing Service.

⁵ Percent of net yield - adjusted for field loss.

⁶ For 2005, data were not published due to insufficient number of samples.

⁷ Russets only.

Round Potatoes: Size Categories ¹

Type State and Year	1 1/2	1 7/8	2	2 1/4	2 1/2	3 1/2	4 Inch and over	Total
	- 1 7/8	- 2	- 2 1/4	- 2 1/2	- 3 1/2	- 4		
	Inches							
	<i>Percent</i>	<i>Percent</i>	<i>Percent</i>	<i>Percent</i>	<i>Percent</i>	<i>Percent</i>	<i>Percent</i>	<i>Percent</i>
2004								
Red Potatoes								
MN	6.9	6.1	14.5	18.6	52.5	1.4		100.0
White Potatoes								
ME ²	1.7	3.0	9.8	16.2	63.2	5.7	0.4	100.0
ND	4.1	3.8	11.0	19.3	55.0	5.6	1.2	100.0
WI	3.6	2.8	8.9	13.7	64.7	5.6	0.7	100.0
2005								
Red Potatoes								
MN	6.3	5.1	14.4	19.7	52.1	2.1	0.3	100.0
White Potatoes								
ME ²	2.3	2.8	8.7	15.2	61.5	8.5	1.0	100.0
ND ³								
WI	3.4	2.4	8.9	12.0	63.1	9.9	0.3	100.0

¹ Gross yield basis.

² Percent of net yield - adjusted for field loss.

³ For 2005, data were not published due to insufficient number of samples.

Maine Long Potatoes (Russet & Shepody): Size Categories ¹

Crop Year	1 1/2 - 1 7/8	1 7/8 - 2	2 in. or 4-6	6-8	8-10	10-12	12-14	14 and Over	Total
	Inches			Ounces					
	Percent	Percent	Percent	Percent	Percent	Percent	Percent	Percent	Percent
2004	2.8	3.7	26.5	21.0	15.2	10.3	6.0	14.5	100.0
2005	4.4	3.9	31.3	18.4	15.7	10.0	5.9	10.4	100.0

¹ Percent of net yield - adjusted for field loss.

Long Potatoes (Russet & Shepody): Size Categories ¹

State and Year	1 1/2 - 1 5/8	1 5/8 - 1 7/8	1 7/8 - 2	2 in. or 4-6	6	7	8	9	10	11	12	13	14 and Over	Total
	Inches				Ounces									
	Percent	Percent	Percent	Percent	Percent	Percent	Percent	Percent	Percent	Percent	Percent	Percent	Percent	Percent
2004														
ID ²	1.8	6.7	4.9	26.8	9.2	8.7	7.8	6.1	5.2	4.4	3.5	2.7	12.2	100.0
MN	1.8	8.8	7.2	35.0	11.6	9.9	7.8	4.9	3.8	2.4	1.9	1.1	3.8	100.0
ND	1.1	6.9	5.5	26.1	10.7	9.9	8.7	6.7	5.9	3.7	3.6	2.3	8.9	100.0
OR	1.8	4.3	3.1	20.2	9.3	9.4	8.5	8.0	6.3	5.4	4.4	2.9	16.4	100.0
WA	0.9	3.7	3.0	21.7	10.0	9.0	8.2	7.0	6.3	5.7	4.8	4.0	15.7	100.0
WI	4.5	4.3	5.9	32.4	12.2	9.7	8.2	6.5	3.9	3.7	2.4	2.1	4.2	100.0
2005														
ID ²	1.9	7.2	4.2	25.6	9.2	8.9	7.7	6.7	5.6	4.5	4.0	2.6	11.9	100.0
MN	1.8	8.0	5.6	29.3	11.7	10.3	8.0	6.4	4.6	4.4	2.9	2.0	5.0	100.0
ND	1.4	6.7	4.5	25.3	11.2	11.1	8.0	7.7	4.9	4.6	3.8	2.4	8.4	100.0
OR	2.0	4.8	3.4	23.8	9.0	9.1	8.2	7.4	5.4	4.7	4.3	3.3	14.6	100.0
WA	0.8	3.4	2.5	22.5	8.6	9.4	7.9	7.3	6.3	5.2	5.1	3.8	17.2	100.0
WI	1.1	5.9	4.8	27.2	10.0	9.3	8.5	7.0	5.8	4.8	4.1	3.0	8.5	100.0

¹ Gross yield basis.

² Russets only.

Information Contacts

Listed below are the commodity specialists in the Crops Branch of the National Agricultural Statistics Service to contact for additional information.

Jeff Geuder, Chief (202) 720-2127

Field Crops Section

Greg Thessen, Head (202) 720-2127
Shiela Corley - Cotton, Cotton Ginnings (202) 720-5944
Scott Cox - Wheat, Rye (202) 720-8068
Ty Kalas - Corn, Proso Millet, Flaxseed (202) 720-9526
Dennis Koong - Peanuts, Rice (202) 720-7688
Travis Thorson - Soybeans, Sunflower, Other Oilseeds (202) 720-7369
Travis Thorson - Hay, Oats, Sorghum (202) 690-3234
Brian Young - Crop Weather, Barley, Sugar Crops (202) 720-7621

Fruit, Vegetable & Special Crops Section

Jim Smith, Head (202) 720-2127
Leslie Colburn - Berries, Grapes, Maple Syrup, Tobacco (202) 720-7235
Debbie Flippin - Fresh and Processing Vegetables, Onions,
 Strawberries (202) 720-2157
Rich Holcomb - Citrus, Tropical Fruits (202) 720-5412
Doug Marousek - Floriculture, Nursery, Nuts (202) 720-4215
Dan Norris - Austrian Winter Peas, Dry Edible Peas, Lentils,
 Mint, Mushrooms, Peaches, Pears,
 Wrinkled Seed Peas (202) 720-3250
Jim Smith - Apples, Apricots, Cherries, Cranberries,
 Plums, Prunes (202) 720-2127
Kim Ritchie - Hops (360) 902-1940
Cathy Scherrer - Dry Beans, Potatoes, Sweet Potatoes (202) 720-4285

ACCESS TO REPORTS!!

For your convenience, there are several ways to obtain NASS reports, data products, and services:

INTERNET ACCESS

All NASS reports are available free of charge on the worldwide Internet. For access, connect to the Internet and go to the NASS Home Page at: **www.nass.usda.gov**.

E-MAIL SUBSCRIPTION

All NASS reports are available by subscription free of charge direct to your e-mail address. Starting with the NASS Home Page at **www.nass.usda.gov**, under the right navigation, *Receive reports by Email*, click on **National** or **State**. Follow the instructions on the screen.

PRINTED REPORTS OR DATA PRODUCTS

CALL OUR TOLL-FREE ORDER DESK: 800-999-6779 (U.S. and Canada)
Other areas, please call 703-605-6220 FAX: 703-605-6900
(Visa, MasterCard, check, or money order acceptable for payment.)

ASSISTANCE

For **assistance** with general agricultural statistics or further information about NASS or its products or services, contact the **Agricultural Statistics Hotline** at **800-727-9540**, 7:30 a.m. to 4:00 p.m. ET, or e-mail: **nass@nass.usda.gov**.

The U.S. Department of Agriculture (USDA) prohibits discrimination in all its programs and activities on the basis of race, color, national origin, age, disability, and where applicable, sex, marital status, familial status, parental status, religion, sexual orientation, genetic information, political beliefs, reprisal, or because all or part of an individual's income is derived from any public assistance program. (Not all prohibited bases apply to all programs.) Persons with disabilities who require alternative means for communication of program information (Braille, large print, audiotape, etc.) should contact USDA's TARGET Center at (202) 720-2600 (voice and TDD).

To file a complaint of discrimination, write to USDA, Director, Office of Civil Rights, 1400 Independence Avenue, S.W., Washington, D.C. 20250-9410, or call (800) 795-3272 (voice) or (202) 720-6382 (TDD). USDA is an equal opportunity provider and employer.

USDA Data Users' Meeting

October 16, 2006

Doubletree Chicago O'Hare Airport - Rosemont

Chicago, Illinois

(847) 292-9100

The USDA's National Agricultural Statistics Service will be organizing an open forum for data users. The purpose will be to provide updates on pending changes in the various statistical and information programs and seek comments and input from data users. Other USDA agencies to be represented will include the Agricultural Marketing Service, the Economic Research Service, the Foreign Agricultural Service, and World Agricultural Outlook Board. The Foreign Trade Division from the Census Bureau will also be included in the meeting.

For registration details or additional information for the Data Users' Meeting, see the NASS homepage at www.nass.usda.gov/forum/ or contact Amy Jenkins (NASS) at (202) 690-8141 or at amy_jenkins@nass.usda.gov.

This Data Users' Meeting precedes an Industry Outlook meeting that will be held at the same location on October 17, 2006. The Outlook meeting brings together analysts from various commodity sectors to discuss the outlook situation. For more information about the outlook meeting and to register contact Jim Robb (Livestock and Marketing Information Center) at (720) 544-2941 or at robb@lmic.info.