

Table of Contents

	<u>Page</u>
Table of Contents	1
Introduction	2
Potato Certification Association of Nebraska Staff, Executive Council, and Advisory Committee	3
History of the Potato Certification Association of Nebraska	4
Information Regarding Field, Bin and Shipping Point Inspections	5
Variety List	7
2020 Nebraska Seed Potato List	9
Field Planting/Nomenclature Table	20
Notice to Buyers	21
2020 Nebraska Seed Potato Directory	22
Notes	23

INTRODUCTION TO THE 2020 SEED POTATO BOOK

This is the official Nebraska Seed Potato Directory of the Potato Certification Association of Nebraska (PCAN) for the 2020 crop year. The Potato Certification Association of Nebraska (PCAN) is a not-for-profit organization and official designated agency of the University of Nebraska-Lincoln. The lots listed in this directory are those that have passed both summer field inspections. The following are required for a lot to be considered certified within the state of Nebraska:

- Originate from planting stocks that were grown in a sterile environment and underwent proper disease testing.
- Pass both summer field inspections. The potato seed stocks on this list represent all seed fields which have passed field inspections and are within the tolerance for diseases and mixtures.
- Pass a bin inspection conducted a minimum of 60 days following harvest, with an emphasis on identifying bacterial ring rot.
- Pass a post-harvest test. PCAN conducts post-harvest tests in one of three ways:
 - A grow out. Samples are grown out in a warm location sometime between November and January and are visually inspected for the presence of PVY, PLRV or other diseases. ELISA tests are conducted on these lots for PVY or PLRV at the request of the grower. If no laboratory test is conducted as part of the grow out, this will be indicated on the North American Plant Health Certificate with an NT (no-test) designation.
 - In a greenhouse. Samples are planted in a greenhouse close to the PCAN office, and not offsite at a warm location. Visual inspections and laboratory testing are conducted the exact same way as in a traditional grow out.
 - Sprout testing. Samples are allowed to sprout, and ELISA tests are conducted on the sprouts. This is the preferred method for varieties with long dormancy.
- Eligible seed lots shall be sampled for a winter test and be approved before replanting as certified seed potatoes in Nebraska.
- Pass a Federal-State shipping point inspection.
- Adhere to all the requirements with the Rules and Regulations of the Potato Certification Association of Nebraska. These Rules and Regulations can be found at the official website of the Potato Certification Association of Nebraska: <http://nebraskapotatoes.com>.
- Nebraska certified seed potatoes may be sorted for sale in one of three grades (Blue, Yellow, Green). See **Shipping Point Inspections** for a more detailed description of these grades.

Potato Certification Association of Nebraska staff, Executive Council and Advisory Committee

Purpose

The Potato Certification Association of Nebraska (PCAN) is a non-profit, non-stock corporation which conducts inspection and certification of potatoes, when authorized by the College of Agriculture of the University of Nebraska in pursuant to sections 81-2, 149 to 81-2, 154 (Reissue Revised Statutes of Nebraska 1943). The agency was designed to encourage the production of potatoes and other crops for seed purposes in the states of Nebraska and Wyoming.

How We Are Structured

In 1931 the Vice Chancellor of the Institute of Agriculture and Natural Resources at the University of Nebraska, under State Law, House Roll 67, designated PCAN as a potato certification agency. Under the law of Nebraska, PCAN was incorporated on June 4, 1951. The Vice Chancellor (with an Advisory Committee), specifies the Standards for Certification, and approves rules and procedures used by the certifying agency. The Advisory Committee is composed of the department heads of Agronomy and Horticulture, Entomology, and Plant Pathology with the Associate Dean of Agriculture Research serving as chairperson.

The Executive Council of PCAN is responsible for financing and administering the regulations and for establishing proper conduct of potato seed certification in the states of Nebraska and Wyoming. The Executive Council consists of four active members who are elected at the Association’s Annual meeting. The manager of PCAN also sits on the Executive Council and serves as the Council’s secretary. A full-time staff, consisting of a Manager and Assistant Manager, is overseen by the Executive Council to conduct day-to-day operations for the agency. These duties include, but are not limited to: field inspections, bin inspections, shipping point inspections, laboratory activities, post-harvest winter tests, representing the agency at professional meetings and promoting Nebraska-raised seed potatoes. The manager and assistant manager of PCAN also provide leadership and assistance to seasonal and part time staff. The structure of Nebraska Potato Certification is detailed in Figure 1.

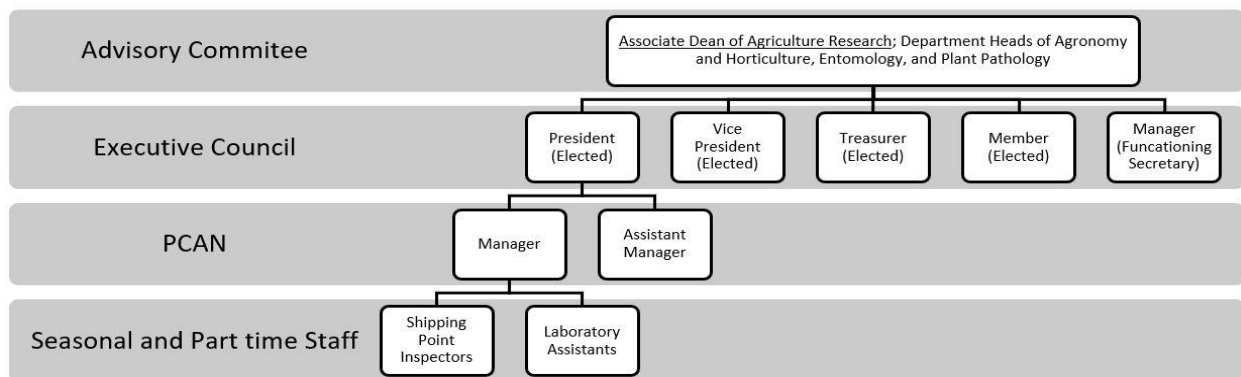


Figure 1. Nebraska Potato Certification structure

Potato Certification Association of Nebraska Administrative Bodies

Members of the Executive Council

Chase Engel – President; Scottsbluff, Nebraska
 Troy Sorensen – Vice President; Alliance, Nebraska
 Lisa Hickman – Treasurer; Alliance, Nebraska
 Jon Gilley – Member; Atkinson, Nebraska
 Josh McBride – Member; North Platte, Nebraska
 Adam Winchester – Secretary/Manager; Gering, Nebraska

Seed Advisory Committee

Dr. Mike Boehm - Vice Chancellor
 Dr. Hector Santiago – Chairman
 Dr. Loren Giesler – Plant Pathology
 Dr. Gary Brewer – Entomology
 Dr. Richard Ferguson – Agronomy and Horticulture

Current Staff of the Potato Certification Association of Nebraska

Adam Winchester.....Manager

Bin and Shipping Point Inspectors:

Terry Weisgerber, Adrian Gonzalez, Gary Leever, John Wickman, Dave Kayton, Brandon Roland, Kay Koupe, Christopher Wright, Aaron Barnes

Summer Field Inspectors:

Gary Leever, Michael Kaus

Laboratory Assistants:

Michael Kaus, Jennifer Dillinger

History of the Potato Certification Association of Nebraska

Nebraska began seed potato certification in Nebraska in 1918, through the University of Nebraska-Lincoln (UNL). Nebraska growers at that time were facing many issues with the deterioration of seed in field and storage. In order to combat this Dr. H.O. Warner was hired as a potato extension specialist by UNL. His first course of action was the creation of the state's first seed potato certification program.

By the early 1920's seed potato certification was turned over to the Foundation Seed Division of the Nebraska Certified Potato Growers Association (NCPGA) (Figure 2). Seed certification was then conducted by NCPGA with UNL oversight. Since NCPGA was created for marketing purposes, many felt a new agency should be established to conduct certification only. In 1952 the Potato Certification Association of Nebraska (PCAN) was incorporated as a non-stock, non-profit association. An Executive Council is elected annually from industry members and all rule changes are approved by the Seed Certification Committee at UNL. PCAN is currently in its sixth decade of operation.



Figure 2. Second Annual Convention of the Nebraska Certified Potato Growers Association.

Field Inspections

Field inspections are important for any certification program because some diseases are more identifiable on the plant than on the tubers. This is the case with many strains of potato virus y (PVY), as well as potato leaf roll virus (PLRV). Furthermore, all lots considered for certification or re-certification by PCAN must be inspected during the plant growth stage (Figure 3).

Three field inspections are conducted annually by PCAN. First inspections are made in June, or once plants are capable of exhibiting symptoms. The following two inspections occur later in summer. This allows time for inspectors to identify problems not seen earlier in the season, including varietal mixtures.

Figure 3. Various tolerances for diseases and varietal mixtures during field inspections.

Class		Foundation						<u>Certified</u>
Disease	Generation	FY0	FY1	FY2	FY3	FY4	FY5	0 thru 6
Leaf roll		0	0.1	0.2	0.3	0.4	0.5	1.0
Mosaic		0	0.1	0.2	0.3	0.4	0.5	2.0
Total serious virus		0	0.2	0.4	0.6	0.6	0.6	3.0
Variety Mixture		0	0.1	0.2	0.3	0.4	0.5	0.5
Blights (Early and Late)		–	–	–	–	–	–	–
Visible Black Leg		0	0.5	0.5	0.5	0.5	1.0	3.0
Colombia Root Knot		0	0	0	0	0	0	0
Nematode		0	0	0	0	0	0	0
Bacterial Ring Rot		No tolerance allowed in any class or generation of seed						

Bin Inspections

PCAN personnel perform storage inspections between harvest and shipping. The purpose of these inspections is to assess the storability, health, and quality of seed during the storage season. Additionally, these inspections aid PCAN personnel and growers in identifying potential issues before the shipping season is underway, allowing growers to make informed decisions concerning their seed. In most cases bin inspections are conducted on samples delivered to the PCAN office.

Bin Inspection Requirements

- Bins need to be approved by PCAN in advance of their use.
- Potatoes eligible for storage inspection and tagging as certified potatoes cannot be stored, graded, or handled in storages containing unidentified potatoes (which were not field inspected for certification), or lots rejected for the presence of Bacterial Ring Rot.
- Separation of seed lots should be easily identifiable.
- A written notification shall be filled with the PCAN office if certified seed stocks are moved in bulk from one storage to another.

Shipping Point Inspections

Shipping point inspections in Nebraska are voluntary, fee-for service inspections that have been administered by PCAN since 1952. The objective of this program is to facilitate trade by providing buyers and sellers of seed potatoes impartial and accurate information regarding quality and condition of seed potato shipments. This information is necessary to satisfy the requirements of state and federal marketing orders, or to verify compliance with specifications in a contract. These inspections are usually performed at the same time seed is being graded, but only after passing both field and storage inspections.

Scoring to determine grade of these shipments is based on the United States Standards for Grades of Potatoes. The following grades are used by PCAN:

Blue Tag Grade

This grade is considered the same as the U.S. #1 Seed Potato Grade. These consist of unwashed potatoes identified as certified seed by the state of origin by blue tags fixed to the containers or official state or federal-state certificates accompanying bulk loads, which identify the crop year, grower, variety and generation, as well as the state certification agency.

Yellow Tag Grade

These are also unwashed potatoes that have not met Blue Tag tolerances for internal defects and certain diseases yet remain certified according to the Rules and Regulations of PCAN. The tagging procedure for the Yellow Grade is the same as the Blue Grade.

Green Tag Grade

This grade is intended as a buyer/seller agreement with no size or grade restrictions. Visual inspection will be performed for Bacterial Ring Rot only. The seed should not be washed and should be tagged the same way as Blue and Yellow Grade shipments.

2020 Variety List

<u>Variety</u>	<u>Acres Accepted</u>	<u>Page</u>
907-15	0.04	8
907-5	0.64	8
Alpine Russet	14.42	8
Alturas	11.97	8
Alverstone Russet	1.85	8
Atlantic	157.63	8
B2727-2	5.38	8
Bannock Russet	11.17	9
Russet Burbank	363.18	9
Caribou Russet	12.6	9
Caribou Russet strain 2492	3.7	9
Castle Russet	6.2	9
Ciklamen	15.92	9
Clearwater Russet	43.0	10
Dakota Russet	53.07	10
Echo Russet	8.5	10
Gala	17.17	10
Gerona	0.37	10
Hamlin	38.2	10
Hodag	7.82	10
Huron Chipper	3.98	11
Ivory Russet	103.26	11
Ivory Russet strain 2482	27.46	11
KO-141846R	0.04	11
KO-152487P	0.06	11
KO-152949R	0.07	11
KO-153228	0.04	11
Lady Alba	1.64	11
Lady Liberty	7.9	11
Lady Terra	0.42	11
Lamoka	416.13	12
Mackinaw	8.72	12
Monica Russet	43.72	12
Mountain Rose	0.29	12
Mountain Gem	154.55	12
Nicolet	54.43	13
NY 162	0.18	13
Petoskey	0.86	13
Proprietary Varieties	172.58	13
Purple Majesty	5.36	13
Ranger Russet	30.32	13
Red LaSoda	24.86	13
Red LaSoda strain 10	73.66	13
Reveille Russet	146.65	14
Rock	7.74	14
Russet Norkotah Standard	65.44	14
Russet Norkotah Colorado strain 3	29.78	15
Russet Norkotah Colorado strain 8	12.87	14
Russet Norkotah Texas strain 112	40	15
Russet Norkotah Texas strain 223	50.77	15

2020 Variety List

<u>Variety</u>	<u>Acres Accepted</u>	<u>Page</u>
Russet Norkotah Texas strain 278	428.06	15
Russet Norkotah Texas strain 296	396.35	16
Russet Norkotah Nebraska LT strain	11.65	16
Shepody	29.84	16
Silverton Russet	113.06	17
Snowden	95.92	17
Sunset Russet	0.3	17
Umatilla Russet	78.06	17
Upstate Abundance	3.76	17
Vanguard Russet	19.05	18
Vizzelle	28.14	18

2020 Summer Field Readings

Variety and Grower	Lot #	First Inspection		Second Inspection		Acres	Field Year	
		Mosaic	Leafroll	Mosaic	Leafroll			
907-15								
CSS Farms	20377	0%	0%	0%	0%	Total acres	0.04	FY1
907-5								
CSS Farms	20364	0%	0%	0%	0%	Total acres	0.64	FY1
Alpine Russet								
Whole Seed Farm	20507	0%	0%	0%	0%	Total acres	14.42	FY3
Alturas								
CSS Farms	20363	0%	0%	0%	0%		1.37	FY1
Whole Seed Farm	20518	0%	0%	0%	0%		9.02	FY2
Whole Seed Farm	20523	0%	0%	0%	0%		1.58	FY1
						Total acres	11.97	
Alverstone Russet								
CSS Farms	20348	0%	0%	0%	0%		1.1	FY2
CSS Farms	20396	0%	0%	0%	0%		0.75	FY1
						Total acres	1.85	
Atlantic								
Clear Horizons Seed Lab	20016	0%	0%	0%	0%		0.1	FY0
CSS Farms, LLC	20107	0%	0%	0%	0%		14.35	FY3
Western Potatoes Inc	20207	0%	0%	0%	0%		6.3	FY2
Western Potatoes Inc	20226	0%	0%	0%	0%		0.96	FY1
Western Potatoes Inc	20253	0%	0%	0%	0%		17	FY3
CSS Farms	20326	0%	0%	0%	0%		4	FY2
CSS Farms	20374	0%	0%	0%	0%		2.65	FY1
Thompson Seed Potatoes	20639	0%	0%	0%	0%		16.76	FY3
Thompson Seed Potatoes	20640	0%	0%	0%	0%		89.5	FY3
Thompson Seed Potatoes	20642	0%	0%	0%	0%		2.62	FY2
Thompson Seed Potatoes	20668	0%	0%	0%	0%		2.02	FY4
Thompson Seed Potatoes	20702	0%	0%	0%	0%		1.3	FY1
Thompson Seed Potatoes	20713	0%	0%	0%	0%		0.07	FY1
						Total acres	157.63	
B2727-2								
Western Potatoes Inc	20235	0%	0%	0%	0%		0.5	FY1
Western Potatoes Inc	20238	0%	0%	0%	0%		0.98	FY2
Western Potatoes Inc	20244	0%	0%	0%	0%		3.9	FY3
						Total acres	5.38	

2020 Summer Field Readings

Variety and Grower	Lot #	First Inspection		Second Inspection		Acres	Field Year
		Mosaic	Leafroll	Mosaic	Leafroll		
Bannock Russet							
Clear Horizons Seed Lab	20001	0%	0%	0%	0%	0.1	FY0
Thompson Seed Potatoes	20648	0%	0%	0%	0%	0.64	FY2
Thompson Seed Potatoes	20649	0%	0%	0%	0%	2.08	FY2
Thompson Seed Potatoes	20665	0%	0%	0%	0%	4.23	FY3
Thompson Seed Potatoes	20693	0%	0%	0%	0%	0.53	FY1
Thompson Seed Potatoes	20723	0%	0%	0%	0%	0.55	FY1
Whole Seed Farm	20519	0%	0%	0%	0%	2.56	FY1
Whole Seed Farm	20520	0%	0%	0%	0%	0.48	FY1
Total acres						11.17	
Russet Burbank							
Clear Horizons Seed Lab	20010	0%	0%	0%	0%	0.1	FY0
CSS Farms	20318	0%	0%	0%	0%	7	FY2
CSS Farms	20403	0%	0%	0%	0%	2.91	FY1
Whole Seed Farm	20502	0%	0%	0%	0%	30.45	FY3
Whole Seed Farm	20503	0%	0%	0%	0%	64.91	FY2
Whole Seed Farm	20504	0%	0%	0%	0%	14.44	FY2
Whole Seed Farm	20509	Trace	0%	0%	0%	74.18	FY3
Whole Seed Farm	20526	0%	0%	0%	0%	8.71	FY1
Thompson Seed Potatoes	20671	0%	0%	0%	0%	65.59	FY3
Thompson Seed Potatoes	20672	0%	0%	0%	0%	3.31	FY3
Thompson Seed Potatoes	20673	0%	0%	0%	0%	15.72	FY2
Thompson Seed Potatoes	20674	0%	0%	0%	0%	71.91	FY3
Thompson Seed Potatoes	20705	0%	0%	0%	0%	3.15	FY1
Thompson Seed Potatoes	20729	0%	0%	0%	0%	0.45	FY1
Thompson Seed Potatoes	20730	0%	0%	0%	0%	0.35	FY1
Total acres						363.18	
Caribou Russet							
CSS Farms	20337	0%	0%	0%	0%	12.6	FY2
Total acres						12.6	
Caribou Russet strain 2492							
CSS Farms	20399	0%	0%	0%	0%	3.7	FY1
Total acres						3.7	
Castle Russet							
CSS Farms	20344	0%	0%	0%	0%	6.2	FY2
Total acres						6.2	
Ciklamen							
CSS Farms	20354	0%	0%	0%	0%	14.21	FY1
CSS Farms	20409	0%	0%	0%	0%	1.71	FY1
Total acres						15.92	

2020 Summer Field Readings

Variety and Grower	Lot #	First Inspection		Second Inspection		Acres	Field Year
		Mosaic	Leafroll	Mosaic	Leafroll		
Clear Water Russet							
Clear Horizons Seed Lab	20002	0%	0%	0%	0%	0.1	FY0
CSS Farms	20342	0%	0%	0%	0%	8.2	FY2
CSS Farms	20405	0%	0%	0%	0%	2.16	FY1
Whole Seed Farm	20516	0%	0%	0%	0%	1.69	FY2
Whole Seed Farm	20517	0%	0%	0%	0%	13.61	FY2
Whole Seed Farm	20521	0%	0%	0%	0%	1.67	FY1
Whole Seed Farm	20522	0%	0%	0%	0%	2.1	FY1
Whole Seed Farm	20530	0%	0%	0%	0%	11.73	FY2
Thompson Seed Potatoes	20721	0%	0%	0%	0%	0.65	FY1
Thompson Seed Potatoes	20731	0%	0%	0%	0%	1.09	FY1
Total acres						43	
Dakota Russet							
CSS Farms, LLC	20103	0%	0%	0%	0%	13.4	FY3
CSS Farms	20346	0%	0%	0%	0%	1.8	FY2
CSS Farms	20398	0%	0%	0%	0%	0.54	FY1
CSS Farms	20410	0%	0%	0%	0%	0.65	FY1
Whole Seed Farm	20508	0%	0%	0%	0%	32.89	FY3
Whole Seed Farm	20514	0%	0%	0%	0%	3.79	FY2
Total acres						53.07	
Echo Russet							
CSS Farms	20343	0%	0%	0%	0%	7.2	FY2
CSS Farms	20407	0%	0%	0%	0%	1.3	FY1
Total acres						8.5	
Gala							
CSS Farms	20355	0%	0%	0%	0%	17.17	FY1
Total acres						17.17	
Gerona							
CSS Farms	20366	0%	0%	0%	0%	0.2	FY1
CSS Farms	20378	0%	0%	0%	0%	0.17	FY1
Total acres						0.37	
Hamlin							
CSS Farms	20314	0%	0%	0%	0%	30.6	FY3
CSS Farms	20341	0%	0%	0%	0%	7.6	FY2
Total acres						38.2	
Hodag							
Western Potatoes Inc	20242	0%	0%	0%	0%	1.2	FY2
Western Potatoes Inc	20243	0%	0%	0%	0%	3.2	FY3
CSS Farms	20327	0%	0%	0%	0%	2.1	FY2
CSS Farms	20376	0%	0%	0%	0%	1.32	FY1
Total acres						7.82	

2020 Summer Field Readings

Variety and Grower	Lot #	First Inspection		Second Inspection		Acres	Field Year
		Mosaic	Leafroll	Mosaic	Leafroll		
Huron Chipper							
Western Potatoes Inc	20241	0%	0%	0%	0%	0.34	FY2
Western Potatoes Inc	20245	0%	0%	0%	0%	2.5	FY3
CSS Farms	20367	0%	0%	0%	0%	1.14	FY1
Total acres						3.98	
Ivory Russet							
CSS Farms	20338	0%	0%	0%	0%	8.4	FY2
Whole Seed Farm	20510	0%	0%	0%	0%	92.17	FY3
Whole Seed Farm	20525	0%	0%	0%	0%	2.69	FY1
Total acres						103.26	
Ivory Russet strain 2482							
CSS Farms	20339	0%	0%	0%	0%	25.4	FY2
CSS Farms	20400	0%	0%	0%	0%	2.06	FY1
Total acres						27.46	
KO-141846R							
CSS Farms	20384	0%	0%	0%	0%	0.04	FY1
Total acres						0.04	
KO-152487P							
CSS Farms	20383	0%	0%	0%	0%	0.06	FY1
Total acres						0.06	
KO-152949R							
CSS Farms	20381	0%	0%	0%	0%	0.07	FY1
Total acres						0.07	
KO-153228							
CSS Farms	20382	0%	0%	0%	0%	0.04	FY1
Total acres						0.04	
Lady Alba							
CSS Farms	20323	0%	0%	0%	0%	1.2	FY2
CSS Farms	20391	0%	0%	0%	0%	0.44	FY1
Total acres						1.64	
Lady Liberty							
Clear Horizons Seed Lab	20014	0%	0%	0%	0%	0.1	FY0
Western Potatoes Inc	20236	0%	0%	0%	0%	0.2	FY1
Western Potatoes Inc	20240	0%	0%	0%	0%	0.4	FY2
Western Potatoes Inc	20246	0%	0%	0%	0%	4.8	FY3
CSS Farms	20387	0%	0%	0%	0%	0.88	FY1
CSS Farms	20324	0%	0%	0%	0%	1.1	FY2
Total acres						7.48	
Lady Terra							
CSS Farms	390	0%	0%	0%	0%	0.42	FY1
Total acres						0.42	

2020 Summer Field Readings

Variety and Grower	Lot #	First Inspection		Second Inspection		Acres	Field Year
		Mosaic	Leafroll	Mosaic	Leafroll		
Lamoka							
Clear Horizons Seed Lab	20015	0%	0%	0%	0%	0.1	FY0
Western Potatoes Inc	20214	0%	0%	0%	0%	14.7	FY2
Western Potatoes Inc	20221	0%	0%	0%	0%	0.7	FY1
Western Potatoes Inc	20222	0%	0%	0%	0%	1.4	FY1
Western Potatoes Inc	20262	0%	0%	0%	0%	102	FY4
Western Potatoes Inc	20263	0%	0%	0%	0%	56	FY4
Western Potatoes Inc	20270	0%	0%	0%	0%	65	FY3
CSS Farms	20307	0%	0%	0%	0%	33	FY2
CSS Farms	20315	0%	0%	0%	0%	17.8	FY3
CSS Farms	20321	0%	0%	0%	0%	119	FY2
CSS Farms	20358	0%	0%	0%	0%	3.73	FY1
CSS Farms	20359	0%	0%	0%	0%	1.5	FY1
CSS Farms	20362	0%	0%	0%	0%	1.2	FY1
Total acres						416.13	
Mackinaw							
Western Potatoes Inc	20239	0%	0%	0%	0%	1.35	FY2
CSS Farms	20333	0%	0%	0%	0%	5.3	FY2
CSS Farms	20373	0%	0%	0%	0%	2.07	FY1
Total acres						8.72	
Monica Russet							
CSS Farms	20319	0%	0%	0%	0%	40.7	FY2
CSS Farms	20406	0%	0%	0%	0%	3.02	FY1
Total acres						43.72	
Mountain Rose							
CSS Farms	20380	0%	0%	0%	0%	0.29	FY1
Mountain Gem							
Clear Horizons Seed Lab	20004	0%	0%	0%	0%	0.1	FY0
Thompson Seed Potatoes	20662	0%	0%	0%	0%	3.15	FY2
Thompson Seed Potatoes	20686	0%	0%	0%	0%	31.8	FY3
Thompson Seed Potatoes	20687	0%	0%	0%	0%	96.27	FY3
Thompson Seed Potatoes	20688	0%	0%	0%	0%	22.4	FY3
Thompson Seed Potatoes	20722	0%	0%	0%	0%	0.83	FY1
Total acres						154.55	

2020 Summer Field Readings

Variety and Grower	Lot #	First Inspection		Second Inspection		Acres	Field Year	
		Mosaic	Leafroll	Mosaic	Leafroll			
Nicolet								
CSS Farms, LLC	20109	0%	0%	0%	0%	23.2	FY3	
CSS Farms, LLC	20110	0%	0%	0%	0%	14.76	FY4	
Western Potatoes Inc	20212	0%	0%	0%	0%	4.2	FY2	
Western Potatoes Inc	20231	0%	0%	0%	0%	0.46	FY1	
Western Potatoes Inc	20237	0%	0%	0%	0%	2.7	FY2	
CSS Farms	20308	0%	0%	0%	0%	8	FY2	
CSS Farms	20388	0%	0%	0%	0%	1.11	FY1	
Total acres						54.43		
NY 162								
CSS Farms	20385	0%	0%	0%	0%	Total acres	0.18	FY1
Petoskey								
CSS Farms, LLC	20104	0%	0%	0%	0%	Total acres	0.86	FY5
Proprietary Varieties								
Total acres						172.6		
Purple Majesty								
CSS Farms	20332	0%	0%	0%	0%	4.2	FY2	
CSS Farms	20375	0%	0%	0%	0%	1.16	FY1	
Total acres						5.36		
Ranger Russet								
Whole Seed Farm	20513	0%	0%	0%	0%	9.49	FY2	
Thompson Seed Potatoes	20628	0%	0%	0%	0%	20.83	FY3	
Total acres						30.32		
Red LaSoda								
Thompson Seed Potatoes	20647	0%	0%	0%	0%	2.93	FY2	
Thompson Seed Potatoes	20683	0%	0%	0%	0%	10.88	FY3	
Thompson Seed Potatoes	20689	0%	0%	0%	0%	11.05	FY3	
Total acres						24.86		
Red LaSoda strain 10								
Clear Horizons Seed Lab	20013	0%	0%	0%	0%	0.1	FY0	
Thompson Seed Potatoes	20632	0%	0%	0%	0%	36.37	FY3	
Thompson Seed Potatoes	20633	0%	0%	0%	0%	26.83	FY3	
Thompson Seed Potatoes	20643	0%	0%	0%	0%	3.57	FY2	
Thompson Seed Potatoes	20644	0%	0%	0%	0%	2.22	FY2	
Thompson Seed Potatoes	20645	0%	0%	0%	0%	4.13	FY2	
Thompson Seed Potatoes	20728	0%	0%	0%	0%	0.44	FY1	
Total acres						73.66		

2020 Summer Field Readings

Variety and Grower	Lot #	First Inspection		Second Inspection		Acres	Field Year
		Mosaic	Leafroll	Mosaic	Leafroll		
Reveille Russet							
Clear Horizons Seed Lab	20006	0%	0%	0%	0%	0.1	FY0
CSS Farms	20394	0%	0%	0%	0%	0.19	FY1
Thompson Seed Potatoes	20604	0%	0%	0%	0%	7.16	FY2
Thompson Seed Potatoes	20616	0%	0%	0%	0%	3.54	FY2
Thompson Seed Potatoes	20617	0%	0%	0%	0%	4.22	FY2
Thompson Seed Potatoes	20625	0%	0%	0%	0%	108.95	FY3
Thompson Seed Potatoes	20630	0%	0%	0%	0%	14.8	FY3
Thompson Seed Potatoes	20646	0%	0%	0%	0%	4.56	FY2
Thompson Seed Potatoes	20699	0%	0%	0%	0%	1	FY1
Thompson Seed Potatoes	20710	0%	0%	0%	0%	0.52	FY1
Thompson Seed Potatoes	20719	0%	0%	0%	0%	0.87	FY1
Thompson Seed Potatoes	20727	0%	0%	0%	0%	0.74	FY1
Total acres						146.65	

Rock							
CSS Farms	20325	0%	0%	0%	0%	3.6	FY2
CSS Farms	20336	0%	0%	0%	0%	3.6	FY3
CSS Farms	20389	0%	0%	0%	0%	0.54	FY1
Total acres						7.74	

Russet Norkotah							
Standard							
Clear Horizons Seed Lab	20008	0%	0%	0%	0%	0.1	FY0
Thompson Seed Potatoes	20614	0%	0%	0%	0%	5.66	FY2
Thompson Seed Potatoes	20615	0%	0%	0%	0%	4.84	FY2
Thompson Seed Potatoes	20631	0%	0%	0%	0%	2.4	FY3
Thompson Seed Potatoes	20682	0%	0%	0%	0%	51.52	FY3
Thompson Seed Potatoes	20695	0%	0%	0%	0%	0.92	FY1
Total acres						65.44	

Russet Norkotah							
Colorado 8 Strain							
CSS Farms	20395	0%	0%	0%	0%	0.54	FY1
Thompson Seed Potatoes	20618	0%	0%	0%	0%	7.53	FY2
Thompson Seed Potatoes	20664	0%	0%	0%	0%	3.76	FY3
Thompson Seed Potatoes	20716	0%	0%	0%	0%	1.04	FY1
Total acres						12.87	

2020 Summer Field Readings

Variety and Grower	Lot #	First Inspection		Second Inspection		Acres	Field Year
		Mosaic	Leafroll	Mosaic	Leafroll		
Russet Norkotah Colorado 3 Strain							
CSS Farms	20350	0%	0%	0%	0%	0.3	FY2
Thompson Seed Potatoes	20612	0%	0%	0%	0%	3.42	FY2
Thompson Seed Potatoes	20685	0%	0%	0%	0%	23.97	FY3
Thompson Seed Potatoes	20690	0%	0%	0%	0%	0.99	FY1
Thompson Seed Potatoes	20692	0%	0%	0%	0%	0.66	FY1
Thompson Seed Potatoes	20715	0%	0%	0%	0%	0.44	FY1
Total acres						29.78	
Russet Norkotah Texas 112 Strain							
Clear Horizons Seed Lab	20007	0%	0%	0%	0%	0.1	FY0
CSS Farms	20392	0%	0%	0%	0%	0.31	FY1
Thompson Seed Potatoes	20613	0%	0%	0%	0%	3.77	FY2
Thompson Seed Potatoes	20623	0%	0%	0%	0%	34.38	FY3
Thompson Seed Potatoes	20697	0%	0%	0%	0%	1.05	FY1
Thompson Seed Potatoes	20725	0%	0%	0%	0%	0.39	FY1
Total acres						40	
Russet Norkotah Texas 223 Strain							
Thompson Seed Potatoes	20611	0%	0%	0%	0%	4.92	FY2
Thompson Seed Potatoes	20622	0%	0%	0%	0%	45.48	FY3
Thompson Seed Potatoes	20711	0%	0%	0%	0%	0.37	FY1
Total acres						50.77	
Russet Norkotah Texas 278 Strain							
Clear Horizons Seed Lab	20005	0%	0%	0%	0%	0.1	FY0
CSS Farms, LLC	20101	0%	0%	0%	0%	118.5	FY3
CSS Farms, LLC	20102	0%	0%	0%	0%	43	FY3
CSS Farms	20320	0%	0%	0%	0%	28.3	FY2
CSS Farms	20402	0%	0%	0%	0%	4.13	FY1
Thompson Seed Potatoes	20601	0%	0%	0%	0%	120.1	FY3
Thompson Seed Potatoes	20602	0%	0%	0%	0%	30.13	FY4
Thompson Seed Potatoes	20608	0%	0%	0%	0%	4.37	FY2
Thompson Seed Potatoes	20610	0%	0%	0%	0%	5.18	FY2
Thompson Seed Potatoes	20619	0%	0%	0%	0%	68.75	FY3
Thompson Seed Potatoes	20704	0%	0%	0%	0%	3.58	FY1
Thompson Seed Potatoes	20717	0%	0%	0%	0%	0.92	FY1
Thompson Seed Potatoes	20726	0%	0%	0%	0%	1	FY1
Total acres						428.06	

2020 Summer Field Readings

Variety and Grower	Lot #	First Inspection		Second Inspection		Acres	Field Year
		Mosaic	Leafroll	Mosaic	Leafroll		
Russet Norkotah Texas 296 Strain							
Clear Horizons Seed Lab	20009	0%	0%	0%	0%	0.1	FY0
CSS Farms, LLC	20105	0%	0%	0%	0%	42.78	FY3
CSS Farms, LLC	20106	0%	0%	0%	0%	119	FY3
CSS Farms	20317	0%	0%	0%	0%	20.4	FY2
CSS Farms	20401	0%	0%	0%	0%	5.26	FY1
Thompson Seed Potatoes	20603	0%	0%	0%	0%	5.41	FY4
Thompson Seed Potatoes	20605	0%	0%	0%	0%	3.41	FY2
Thompson Seed Potatoes	20606	0%	0%	0%	0%	4.24	FY2
Thompson Seed Potatoes	20607	0%	0%	0%	0%	3.22	FY2
Thompson Seed Potatoes	20609	0%	0%	0%	0%	4.1	FY2
Thompson Seed Potatoes	20620	0%	0%	0%	0%	126.74	FY3
Thompson Seed Potatoes	20624	0%	0%	0%	0%	54.9	FY4
Thompson Seed Potatoes	20621	0%	0%	0%	0%	1.82	FY4
Thompson Seed Potatoes	20703	0%	0%	0%	0%	3.42	FY1
Thompson Seed Potatoes	20718	0%	0%	0%	0%	0.7	FY1
Thompson Seed Potatoes	20724	0%	0%	0%	0%	0.85	FY1
Total acres						396.35	

Russet Norkotah Nebraska LT Strain							
Thompson Seed Potatoes	20641	0%	0%	0%	0%	0.45	FY2
Thompson Seed Potatoes	20714	0%	0%	0%	0%	0.15	FY1
Thompson Seed Potatoes	20629	0%	0%	0%	0%	11.05	FY3
Total acres						11.65	

Shepody							
CSS Farms	20329	0%	0%	0%	0%	5.2	FY2
CSS Farms	20408	0%	0%	0%	0%	1.19	FY1
Whole Seed Farm	20515	0%	0%	0%	0%	9.97	FY2
Thompson Seed Potatoes	20653	0%	0%	0%	0%	2.34	FY2
Thompson Seed Potatoes	20679	0%	0%	0%	0%	2.42	FY3
Thompson Seed Potatoes	20684	0%	0%	0%	0%	8.72	FY3
Total acres						29.84	



2020 Summer Field Readings

Variety and Grower	Lot #	First Inspection		Second Inspection		Acres	Field Year
		Mosaic	Leafroll	Mosaic	Leafroll		
Silverton Russet							
CSS Farms, LLC	20108	0%	0%	0%	0%	26.13	FY3
CSS Farms	20340	0%	0%	0%	0%	9.9	FY2
CSS Farms	20404	0%	0%	0%	0%	2.63	FY1
Thompson Seed Potatoes	20654	0%	0%	0%	0%	3.29	FY2
Thompson Seed Potatoes	20655	0%	0%	0%	0%	1.88	FY2
Thompson Seed Potatoes	20677	0%	0%	0%	0%	68.03	FY3
Thompson Seed Potatoes	20691	0%	0%	0%	0%	0.74	FY1
Thompson Seed Potatoes	20712	0%	0%	0%	0%	0.46	FY1
Total acres						113.06	

Snowden							
CSS Farms	20301	0%	0%	0%	0%	69.6	FY3
CSS Farms	20306	0%	0%	0%	0%	22.6	FY2
CSS Farms	20360	0%	0%	0%	0%	3.72	FY1
Total acres						95.92	

Sunset Russet								
CSS Farms	20349	0%	0%	0%	0%	Total acres	0.3	FY2

Umatilla Russet							
Whole Seed Farm	20501	0%	0%	0%	0%	122.16	FY5
Whole Seed Farm	20505	0%	0%	0%	0%	26.08	FY2
Whole Seed Farm	20506	0%	0%	0%	0%	17.04	FY2
Whole Seed Farm	20511	Trace	0%	0%	0%	114.75	FY3
Whole Seed Farm	20512	0%	0%	0%	0%	64.47	FY3
Whole Seed Farm	20527	0%	0%	0%	0%	3.3	FY1
Whole Seed Farm	20528	0%	0%	0%	0%	3.4	FY1
Whole Seed Farm	20529	0%	0%	0%	0%	7.7	FY2
Thompson Seed Potatoes	20657	0%	0%	0%	0%	2.75	FY2
Thompson Seed Potatoes	20658	0%	0%	0%	0%	3.2	FY2
Thompson Seed Potatoes	20678	0%	0%	0%	0%	56.92	FY3
Thompson Seed Potatoes	20701	0%	0%	0%	0%	0.79	FY1
Total acres						78.06	

Upstate Abundance							
CSS Farms	20328	0%	0%	0%	0%	2.6	FY2
CSS Farms	20379	0%	0%	0%	0%	1.16	FY1
Total acres						3.76	

2020 Summer Field Readings

Variety and Grower	Lot #	First Inspection		Second Inspection		Acres	Field Year
		Mosaic	Leafroll	Mosaic	Leafroll		
Vanguard Russet							
CSS Farms, LLC	20111	0%	0%	0%	0%	16.65	FY4
CSS Farms	20345	0%	0%	0%	0%	2	FY2
CSS Farms	20397	0%	0%	0%	0%	0.4	FY1
Total acres						19.05	
Vizzelle							
Thompson Seed Potatoes	20660	0%	0%	0%	0%	5.94	FY2
Thompson Seed Potatoes	20669	0%	0%	0%	0%	22.2	FY3
Total acres						28.14	
W9426-3R/W							
CSS Farms	20322	0%	0%	0%	0%	0.8	FY2
CSS Farms	20365	0%	0%	0%	0%	0.17	FY1
Total acres						0.97	
W9433-1rus							
CSS Farms	20393	0%	0%	0%	0%	0.31	FY1
Total acres						0.31	
W9433-1RW							
CSS Farms	20347	0%	0%	0%	0%	1.2	FY2
Total acres						1.2	
Waneta							
CSS Farms, LLC	20112	0%	0%	0%	0%	23.2	FY3
Western Potatoes Inc	20233	0%	0%	0%	0%	1.8	FY1
CSS Farms	20309	0%	0%	0%	0%	2.8	FY2
CSS Farms	20386	0%	0%	0%	0%	0.73	FY1
Total acres						28.53	
Yukon Gold							
Thompson Seed Potatoes	20667	0%	0%	0%	0%	2.99	FY4
Thompson Seed Potatoes	20680	0%	0%	0%	0%	20.33	FY3
Total acres						23.32	

Field Planting/Nomenclature Table

Field Planting Equivalency Table, YEAR IN THE FIELD _{2,3}								
Agency	1	2	3	4	5	6	7	8
Alaska	G1	G2	G3	G4	G5	G6	G7	G8
California	G1	G2	G3	G4	G5	----	----	----
Colorado	G1	G2	G3	G4	G5	G6	----	----
Idaho ⁵	FY1	FY2	FY3	FY4	FY5	FY6	FY7	----
Maine ⁵	FY1	FY2	FY3	FY4	FY5	----	----	----
Michigan ⁵	FY1	FY2	FY3	FY4	FY5	FY6	----	----
Minnesota	G1	G2	G3	G4	G5	G6	C	----
Montana	N	G1	G2	G3	G4	G5	----	----
Nebraska/Wyoming ⁵	FY1	FY2	FY3	FY3	FY5	FY6	----	----
Nevada	N	G1	G2	G3	G4	G5	----	----
New York ⁴	(U)G1	(U)G2	(U)G3	G4	G5	G6	----	----
North Dakota ⁵	FY1	FY2	FY3	FY4	FY5	FY6	C	----
Oregon ⁵	FY1	FY2	FY3	FY4	FY5	FY6	----	----
Utah	N(G1)	G2	G3	G4	G5	G6	----	----
Washington	N	G1	G2	G3	G4	G5	----	----
Wisconsin ⁶	FY1	FY2	FY3	FY4	FY5	FY6	C	----
Canada	PE	E1	E2	E3	E4	F	C	----

¹The purpose of this table is to express equivalency of terms used by various certification agencies for seed potatoes harvested from a series of successive field plantings. For specific criteria relating to disease tolerances and other requirements, the reader is referred to the certification regulations of the agency in question.

²The first field planting utilizes laboratory-tested stocks which may be tissue-cultured plantlets, greenhouse-produced minitubers, stem cuttings, or line selections. Contact agencies for details as to types of stocks planted in their programs.

³Terms used by agency for seed potatoes for a particular year in the field: C = certified, E = elite, F = foundation, G = generation, N = nuclear, PE = pre-elite.

⁴If lots originate at Cornell-Uihlein Farm, the first three generations (G1-G3) are also designated by a (U) to denote source.

⁵FY = Field Year

⁶FY = Foundation Year

Notice to Buyers

This seed book is not an exhaustive list of all requirements for certification for Nebraska Seed Potatoes. All potential buyers of Nebraska Seed Potatoes should refer to the Rules and Regulations of the Potato Certification Association of Nebraska. The Rules and Regulations of the Potato Certification Association of Nebraska contain all testing and inspection requirements for Nebraska Seed Potatoes. Disease tolerances are also contained within these Rules and Regulations. These Rules and Regulations can be found at the official website of the Potato Certification Association of Nebraska: <http://nebraskapotatoes.com>.

It is industry standard to reference the North American Plant Health Certificate for each lot contained within this Seed Book. The North American Plant Health Certificates provide a summary of summer field inspections, BRR testing, winter test results, winter lot inspection results for each lot.

Potato Certification Association of Nebraska

2020 GROWER DIRECTORY

BROWN ENTERPRISES

Don Brown
Alan Brown
P.O. Box 708
Pine Bluffs, WY 82082
Phone: 307-245-3692
Email: brownphinney@hotmail.com
Fax: 307-245-3210

CLEAR HORIZONS SEED LAB

Chase Engel
50668 Hwy 71
Scottsbluff, NE 69361
Email: chase_engel@hotmail.com
Phone: 308-760-3380

CSS FARMS

Adam Naslund-Cody Farm Manager
35550 Boiling Springs Road
Cody, NE 69211
Phone (Office): 402-823-4041
Email: adam.naslund@cssfarms.com
Fax: 402-823-4061

CSS FARMS, LLC

Josh McBride - North Platte, Farm
North Platte Address
Email: josh.mcbride@cssfarms.com
Phone: 402-389-2161

THOMPSON SEED POTATOES

Dan Thompson
Joe Thompson
Phone: 308-760-6553
Email: jthompson@bbc.net
6541 Jefferson Road Alliance NE
69301

COUNTRYWIDE POTATO, LLC

Lisa Hickman
Phone: 308-762-7699
Email: lisa.hickman@ymail.com
Toll Free: 1-800-922-7699
6541 Jefferson Road Alliance NE
69301

WESTERN POTATOES, INC

Troy Sorensen
Frank Favela
P.O. Box 755/189 Brayton Road
Frank: 308-760-5643
Troy: 308-760-9365
Office: 308-762-4917
Fax: 308-762-7656
Email: westernpotatoesinc@gmail.com

Whole Seed Farm

Jon Gilley
701-212-8633
Email: jgilley@rdoffutt.com
48002 879th Road Atkinson, NE 68713

